

N/80

Método para Trompa

por

D. Valeriano Bustos.

Profesor de Trompa del Conservatorio de Música y Declamación

de

Madrid

R^o 14827
11-12-62

Exercicios Progresivos para la Trompa sobre los intervalos naturales de la Escala Diatonica: =

1^o

2^o

3^o ||

4^o ||

Ejercicios de notas filadas

5^o ||

Otras de las
Atacadas.

8. || G :C

sueñas

9. || G :C

10. || G :C

Handwritten musical score for the first system, consisting of six staves. The notation includes various rhythmic values, slurs, and dynamic markings. The first staff begins with a treble clef and a common time signature. The music is written in a cursive hand typical of 18th or 19th-century manuscripts.

Handwritten musical score for the second system, consisting of ten staves. It begins with a treble clef, a common time signature, and a tempo marking "Allegro". The notation is dense with triplets and slurs. The system concludes with a double bar line and a fermata.

12.

Handwritten musical score for exercise 12. The score is written on a single system of five staves. The first staff begins with a treble clef and a common time signature (C). The music consists of a series of rhythmic patterns, primarily eighth and sixteenth notes, with various articulation marks such as accents (>) and slurs. The notation is dense and fills most of the staves. The piece concludes with a double bar line and a decorative flourish.

13.

Handwritten musical score for exercise 13. The score is written on a single system of five staves. The first staff begins with a treble clef and a common time signature (C). The music consists of a series of rhythmic patterns, primarily eighth and sixteenth notes, with various articulation marks such as accents (>) and slurs. The notation is dense and fills most of the staves. The piece concludes with a double bar line and a decorative flourish.

The first system of the handwritten musical score consists of five staves. The notation includes a variety of rhythmic values, primarily eighth and sixteenth notes, often grouped in beams. There are several accents (>) and slurs over the notes. The first staff begins with a treble clef and a common time signature (C). The music concludes with a double bar line and a decorative flourish.

The second system of the handwritten musical score consists of six staves. It begins with a treble clef and a common time signature (C). The notation is characterized by frequent triplet markings (indicated by the number '3' above groups of notes) and accents (>). The music concludes with a double bar line and a final note.

J. Pto

15. |

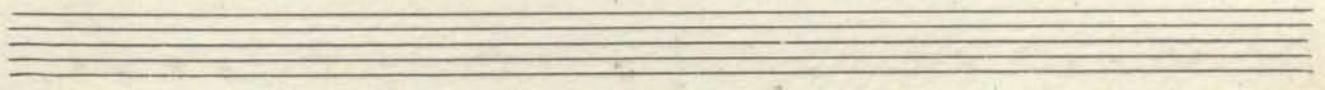
Sincopas.

16. ||

V. Pto

Intervallos picados

Handwritten musical score for the first system, consisting of seven staves of music. The notation includes various note values, rests, and phrasing slurs. The music is written in a single system across seven staves.



Handwritten musical score for the second system, starting with a double bar line and measure number 18. It includes six staves of music. Measure numbers 12, 23, and a signature 'V. Pto' are visible. The notation includes various note values, rests, and phrasing slurs.

A handwritten musical score consisting of 15 staves. The notation includes various note values (quarter, eighth, and sixteenth notes), rests, and dynamic markings such as *1*, *12*, and *2*. The score is written in a historical style, likely from the 18th or 19th century. The first staff begins with a treble clef and a key signature of one sharp (F#). The music features a mix of melodic lines and rhythmic patterns, with some notes beamed together. The final staff ends with a double bar line and a fermata over the final note.

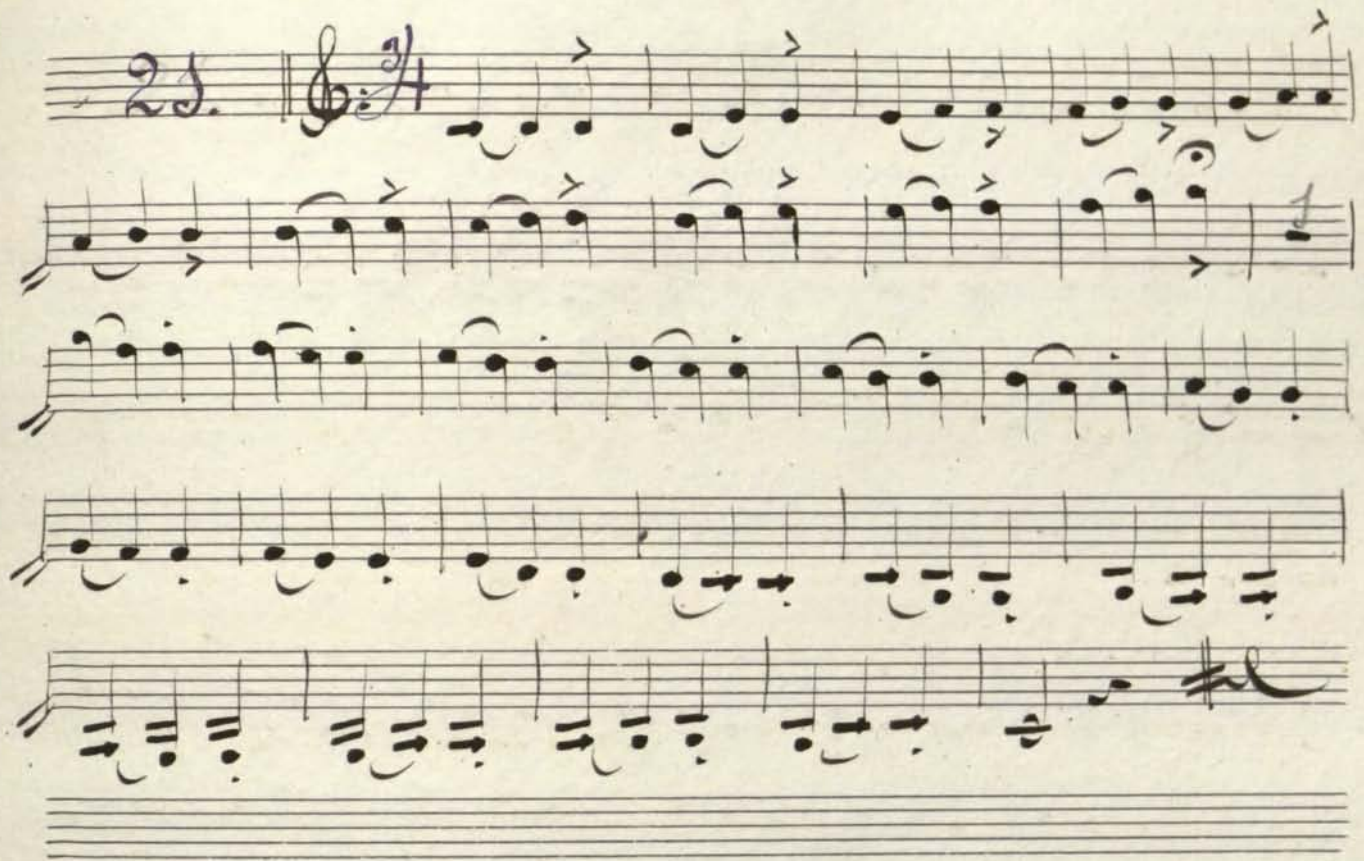
Handwritten musical score on 15 staves. The first staff begins with the number '59' in blue ink, followed by a treble clef and a common time signature 'C'. The music consists of a single melodic line with eighth and sixteenth notes, and rests. The notation is in black ink on aged paper.

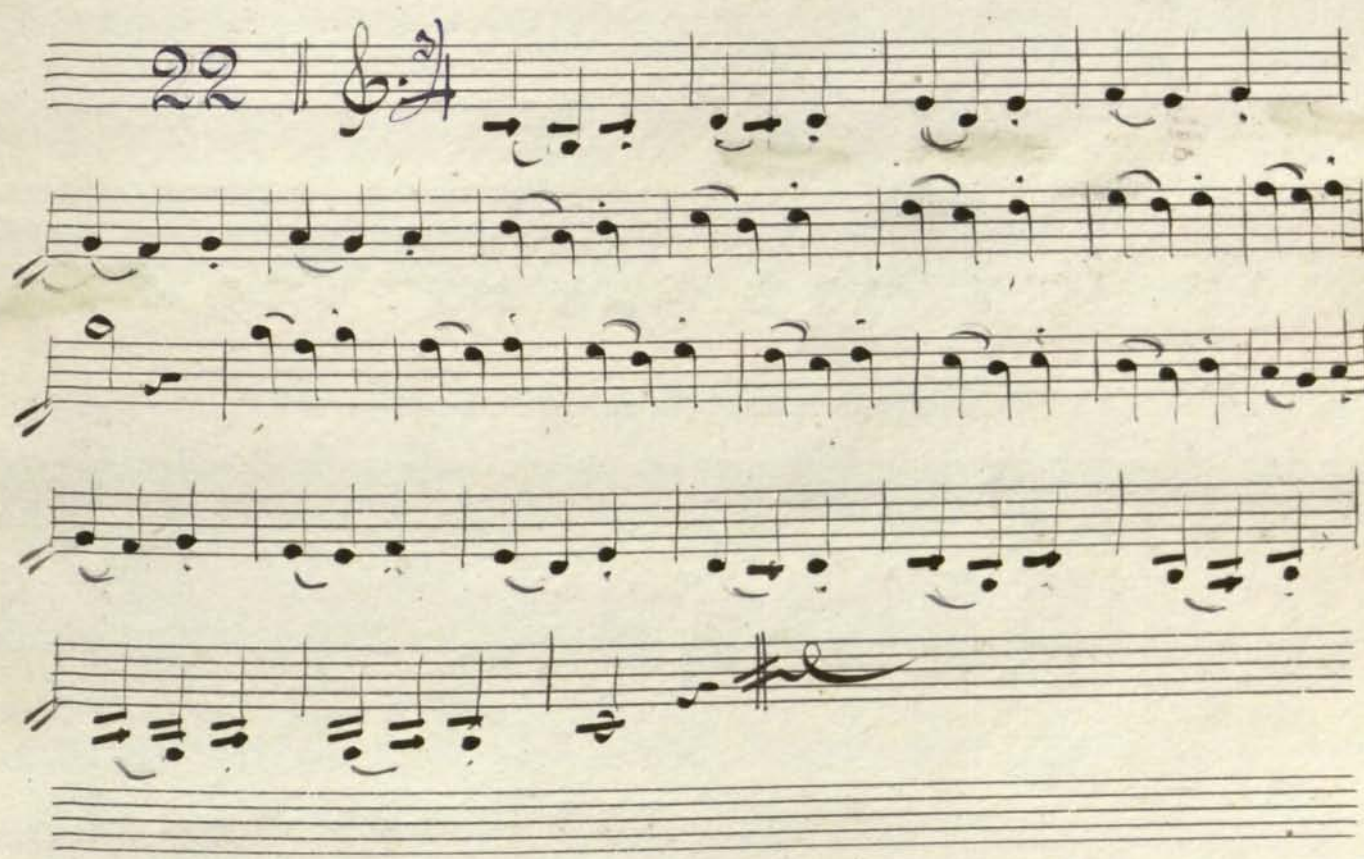
V. P^{to}

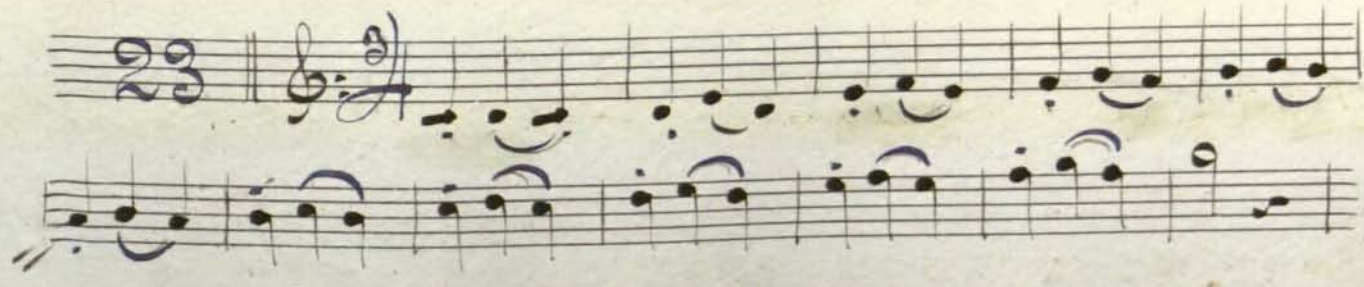
Copyright © Real Conservatorio Superior de Música de Madrid. Información sobre copyright - biblioteca@rcsmm.eu
Copyright © Madrid's Royal Music Conservatory. Information about copyright - biblioteca@rcsmm.eu
RCSMM - REAL CONSERVATORIO SUPERIOR DE MÚSICA DE MADRID

Intervalos ligados

20. | C |

21. | 

22. | 

23. | 

V. P. to

Handwritten musical notation for the first system, consisting of three staves. The notation includes various notes, rests, and a double bar line with a repeat sign.

Dicados

Handwritten musical notation for the second system, starting with a treble clef and a 2/4 time signature. It consists of four staves of music.

Dicados

Handwritten musical notation for the third system, starting with a treble clef and a 2/4 time signature. It consists of five staves of music.

Diapason.

26. $\text{♩} = 4$

27. $\text{♩} = 2$

28. $\text{♩} = 2$

V. 2^{to}

Handwritten musical score for measures 27-31. The score consists of four staves. The first staff begins with a treble clef and a key signature of one sharp (F#). The music is written in a rhythmic style with eighth and sixteenth notes, often beamed together. The piece concludes with a double bar line and a sharp sign (#).

29. Handwritten musical score for measures 29-32. The score consists of four staves. The first staff begins with the number '29.', a treble clef, and a 4/4 time signature. The music continues with rhythmic patterns of eighth and sixteenth notes. The piece concludes with a double bar line and a sharp sign (#).

30. Handwritten musical score for measures 30-33. The score consists of three staves. The first staff begins with the number '30.', a treble clef, and a 3/4 time signature. The music continues with rhythmic patterns of eighth and sixteenth notes. The piece concludes with a double bar line and a sharp sign (#).

Handwritten musical score for measures 28-31. The notation is dense, featuring many beamed notes and rests across five staves. The first four staves are in treble clef, and the fifth is in bass clef.

Handwritten musical score for measures 32-34. Measure 32 is marked with a '32' and a common time signature. The first two staves are in treble clef, and the third is in bass clef.

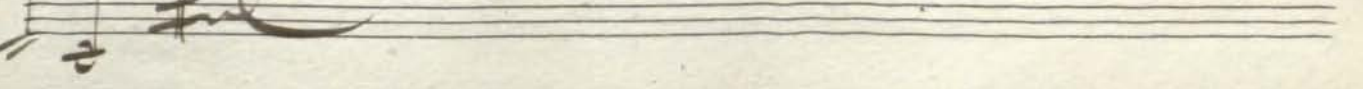
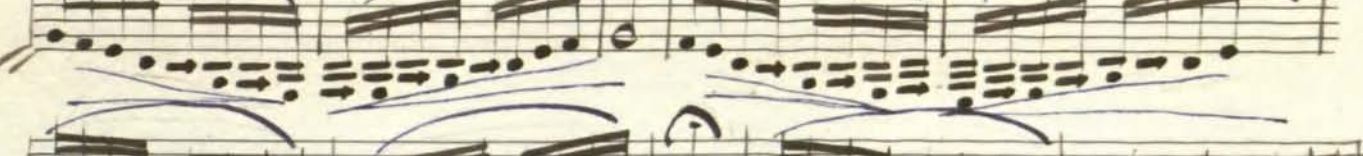
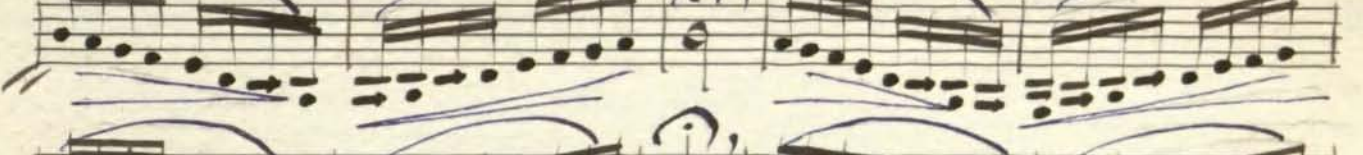
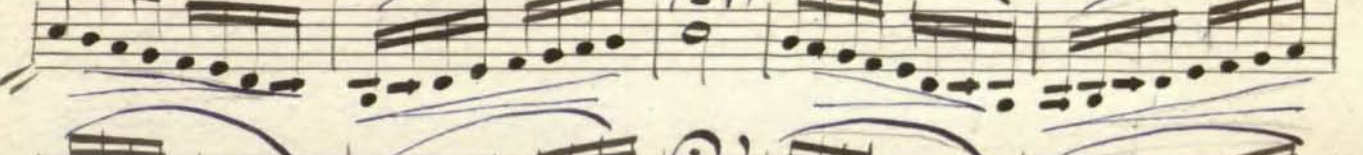
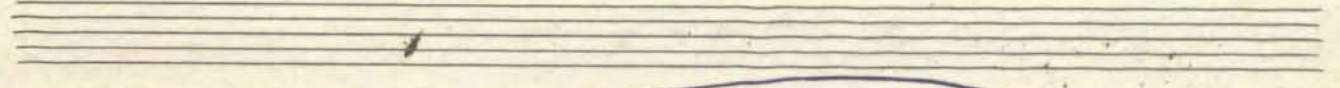
Handwritten musical score for measures 35-38. Measure 35 is marked with a '32.' and a common time signature. The first two staves are in treble clef, and the last two are in bass clef.

33. | &: 3/4 | *Handwritten musical notation for exercise 33, measures 1-4. The first staff is in treble clef with a 3/4 time signature. The second staff is in bass clef. The music consists of eighth and sixteenth notes with various rests.*

El número 34 al final

35. | &: 3/4 | *Handwritten musical notation for exercise 35, measures 1-4. The first staff is in treble clef with a 3/4 time signature. The second and third staves are in bass clef. The music features eighth notes with slurs and a final measure with a sharp sign.*

36. | &: C | *Handwritten musical notation for exercise 36, measures 1-6. The first staff is in treble clef with a common time signature. The second through sixth staves are in bass clef. The music consists of eighth notes with slurs and a final measure with a sharp sign.*



Ejercicios Melódicos = 1º para practicar el intervalo de 2ª

(1)

12

(1) Ataquense bien todas las notas.

2º Para practicar el intervalo de 3ª

3º Para practicar el intervalo de A^{\sharp}

4º Para practicar el intervalo de B^{\sharp}

5^o Para practicar el intervalo de 6^a

Handwritten musical notation for the 5th exercise, titled "5^o Para practicar el intervalo de 6^a". The exercise is written on five staves in treble clef with a common time signature (C). The first staff begins with a large number "5". The notation includes various rhythmic values such as quarter, eighth, and sixteenth notes, along with rests and accidentals. A first ending bracket labeled "1" and a second ending bracket labeled "2" are present in the first staff. The piece concludes with a double bar line and a sharp sign (#).

6^o Para practicar el intervalo de 7^a

Handwritten musical notation for the 6th exercise, titled "6^o Para practicar el intervalo de 7^a". The exercise is written on five staves in treble clef with a common time signature (C). The first staff begins with a large number "6". The notation includes various rhythmic values such as quarter, eighth, and sixteenth notes, along with rests and accidentals. A first ending bracket labeled "1.2." is present in the second staff. The piece concludes with a double bar line and a sharp sign (#).

7^o Para practicar el intervalo de 8^a

Handwritten musical notation for the 7th exercise, titled "7^o Para practicar el intervalo de 8^a". The exercise is written on one staff in treble clef with a common time signature (C). The notation includes various rhythmic values such as quarter, eighth, and sixteenth notes, along with rests and accidentals. The piece concludes with a double bar line and a sharp sign (#).

Handwritten musical score for the first system, consisting of five staves. The notation includes various note values, rests, and dynamic markings such as 'p' and 'f'.

Two empty musical staves.

Handwritten musical score for the second system, consisting of eight staves. It features a treble clef, a common time signature, and various musical notations including notes, rests, and dynamic markings.

Two empty musical staves.

Handwritten musical score for the first system, measures 9-14. The music is written in treble clef with a key signature of one flat (B-flat). The time signature is 9/8. The notation includes various note values (quarter, eighth, and sixteenth notes), rests, and slurs. The first measure (measure 9) begins with a double bar line and a repeat sign. The system concludes with a double bar line and a sharp sign indicating the end of the system.

Two empty musical staves, likely representing a continuation of the score or a section that has been omitted.

Handwritten musical score for the second system, measures 15-20. The music continues in the same treble clef and key signature. The time signature is 10/8. The notation features a variety of rhythmic patterns, including eighth and sixteenth notes, and rests. The system ends with a double bar line and a sharp sign.

Two empty musical staves at the bottom of the page, similar to the first system's continuation.

(Tenuto)

Ejercicios de 3^{as}.

Handwritten musical notation on three staves. The first staff contains a sequence of notes, including quarter and eighth notes. The second staff continues the melodic line with similar note values. The third staff features a series of chords, possibly triads or dyads, written as vertical lines with stems and flags.

39. Exercise 39, marked with a treble clef and a common time signature (C). The notation consists of ten staves of music. The first staff begins with a treble clef and a common time signature. The music is written in a single melodic line, featuring a variety of note values including quarter, eighth, and sixteenth notes, as well as rests. The piece concludes with a double bar line.

Handwritten musical score for the first system, consisting of four staves. The notation includes various note values, rests, and dynamic markings such as 'p' and 'f'.

Handwritten musical score for the second system, consisting of eight staves. It begins with a tempo marking "Allegro" and a time signature of 2/4. The notation includes various note values, rests, and dynamic markings.

Handwritten musical score on 15 staves. The first staff contains a treble clef, a key signature of one sharp (F#), and a common time signature (C). The notation includes various note values such as quarter, eighth, and sixteenth notes, as well as rests and dynamic markings like 'p' (piano). The score is written in a cursive, handwritten style on aged paper.

Handwritten musical notation for the first system, consisting of two staves. The top staff contains a sequence of notes and rests, while the bottom staff contains a similar sequence with some beamed notes.

Handwritten musical notation for the second system, starting with a treble clef and a common time signature. It consists of five staves of music with various note values and rests.

Handwritten musical notation for the third system, starting with a treble clef and a common time signature. It consists of five staves of music with various note values and rests.

Handwritten musical score for measures 44-45. The score is written on five staves. The first staff begins with a treble clef, a common time signature (C), and a double bar line with the measure number '44'. The music consists of a melody in the upper voice and accompaniment in the lower voices. The notation includes quarter notes, eighth notes, and rests, with some notes beamed together. The piece concludes with a double bar line and a sharp sign (#) on the fifth staff.

Handwritten musical score for measures 46-47. The score is written on five staves. The first staff begins with a treble clef, a common time signature (C), and a double bar line with the measure number '46'. The music continues with a melody and accompaniment. The notation includes quarter notes, eighth notes, and rests. The piece concludes with a double bar line and a sharp sign (#) on the fifth staff.

Handwritten musical score for measure 48. The score is written on two staves. The first staff begins with a treble clef, a common time signature (C), and a double bar line with the measure number '48'. The music consists of a melody and accompaniment. The notation includes quarter notes and eighth notes. The piece concludes with a double bar line.

P. Pto

Handwritten musical notation for the first system, consisting of four staves. The top staff contains a melodic line with slurs and ties. The second and third staves contain accompaniment with chords and moving lines. The fourth staff is empty.

Handwritten musical notation for the second system, consisting of four staves. The top staff begins with a treble clef and a common time signature. The notation continues with melodic and accompaniment lines.

Handwritten musical notation for the third system, consisting of four staves. The top staff begins with the number '50' and a treble clef with a common time signature. The notation continues with melodic and accompaniment lines.

51.

52.

53

Handwritten musical score for exercise 53. It consists of two systems of staves. The first system has a treble clef staff and a bass clef staff. The treble staff contains a series of eighth notes with slurs, while the bass staff contains a series of quarter notes with slurs. The second system continues the piece, ending with a double bar line and a sharp sign.

54

Handwritten musical score for exercise 54. It consists of two systems of staves. The first system has a treble clef staff and a bass clef staff. The treble staff contains a series of eighth notes with slurs, while the bass staff contains a series of quarter notes with slurs. The second system continues the piece, ending with a double bar line and a sharp sign.

55

Handwritten musical score for exercise 55. It consists of two systems of staves. The first system has a treble clef staff and a bass clef staff. The treble staff contains a series of eighth notes with slurs, while the bass staff contains a series of quarter notes with slurs. The second system continues the piece, ending with a double bar line and a sharp sign.

56. *allegro*

57. *allegro*

58. | C |

59. | C |

60. | F |

61.

Handwritten musical score for exercise 61. The score begins with a treble clef and a 3/4 time signature. The first staff contains a series of rests followed by a sequence of notes. The subsequent staves contain continuous melodic lines with various note values, including quarter, eighth, and sixteenth notes, often grouped with slurs. The piece concludes with a double bar line and a sharp sign on the final staff.

62.

Handwritten musical score for exercise 62. The score begins with a treble clef and a 3/4 time signature. The first staff contains a sequence of notes. The subsequent staves contain continuous melodic lines with various note values, including quarter, eighth, and sixteenth notes, often grouped with slurs. The piece concludes with a double bar line and a sharp sign on the final staff.

63.

Handwritten musical score for exercise 63. The notation is in a treble clef with a 3/4 time signature. The piece consists of seven staves of music. The first staff begins with a treble clef and a 3/4 time signature. The music is written in a single melodic line, featuring a variety of note values including quarter, eighth, and sixteenth notes, as well as rests. Slurs are used to group notes across measures. The piece concludes with a double bar line and a sharp sign on the seventh staff.

64.

Handwritten musical score for exercise 64. The notation is in a treble clef with a 2/4 time signature. The piece consists of six staves of music. The first staff begins with a treble clef and a 2/4 time signature. The music is characterized by frequent sixteenth-note patterns, often beamed together in groups. Slurs are used to group notes across measures. The piece concludes with a double bar line and a sharp sign on the sixth staff.

alle

65.

Handwritten musical score for exercise 65. It begins with a treble clef and a common time signature (C). The music is written on six staves. The first staff contains the number '65.' and the tempo marking 'alle'. The notation includes various rhythmic values such as eighth and sixteenth notes, often beamed together, and rests. The key signature has one sharp (F#). The piece concludes with a double bar line and a fermata.

66

Handwritten musical score for exercise 66. It begins with a treble clef and a common time signature (C). The music is written on six staves. The first staff contains the number '66'. The notation includes various rhythmic values such as eighth and sixteenth notes, often beamed together, and rests. The key signature has one sharp (F#). The piece concludes with a double bar line and a fermata.

67

Handwritten musical score for measure 67. The notation is in treble clef with a 3/4 time signature. It consists of six staves of music. The first staff begins with a treble clef, a 3/4 time signature, and a repeat sign. The music features a variety of note values, including eighth and sixteenth notes, and is characterized by frequent slurs and ties. The piece concludes with a double bar line and a sharp sign on the final staff.

68.

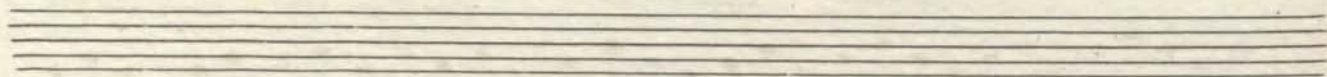
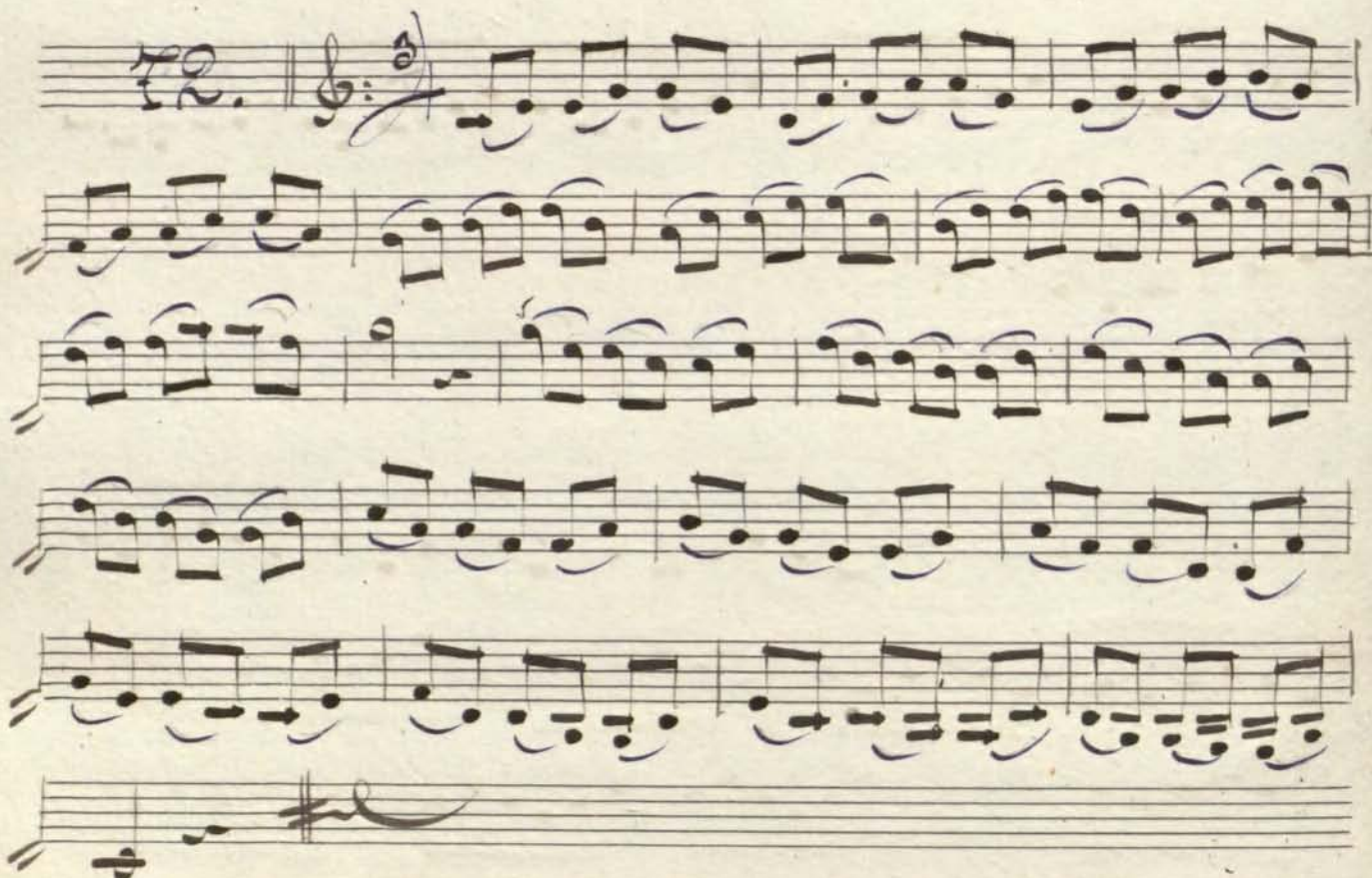
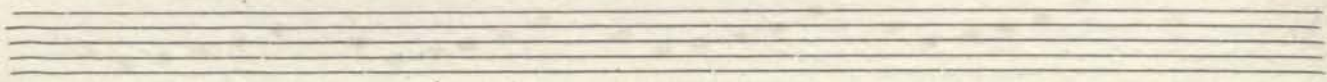
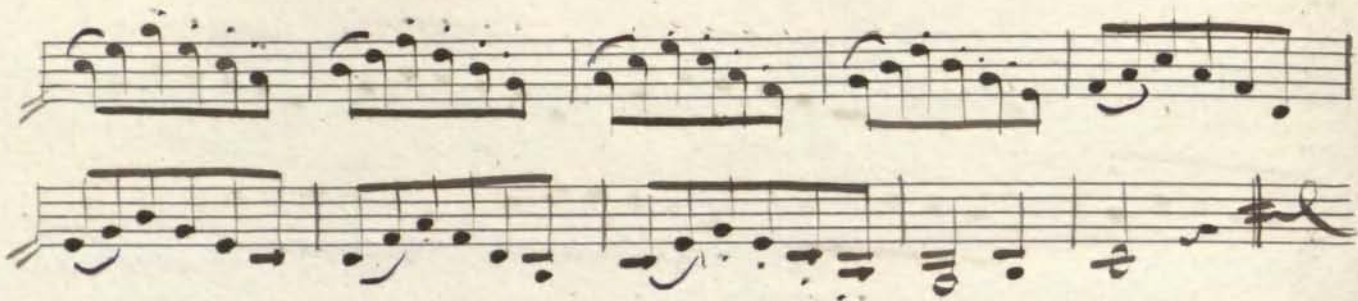
Handwritten musical score for measure 68. The notation is in treble clef with a 3/4 time signature. It consists of seven staves of music. The first staff begins with a treble clef, a 3/4 time signature, and a repeat sign. The music features a variety of note values, including eighth and sixteenth notes, and is characterized by frequent slurs and ties. The piece concludes with a double bar line and a sharp sign on the final staff.

69

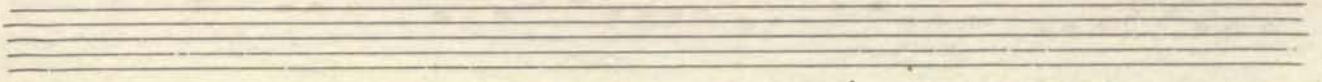
70

71

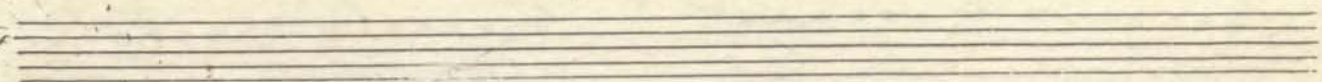
F. Pto



Handwritten musical notation for the first system, consisting of two staves with treble clefs and a 2/4 time signature. The music features a melody in the upper voice and a bass line in the lower voice, both primarily composed of eighth and sixteenth notes.



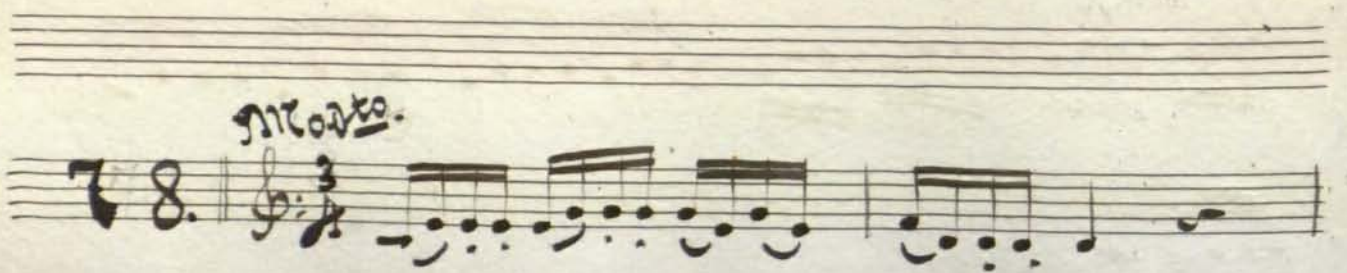
Handwritten musical notation for the second system, consisting of two staves with treble clefs and a 2/4 time signature. The notation is dense with many beamed eighth and sixteenth notes, indicating a fast or intricate passage.



Handwritten musical notation for the third system, consisting of two staves with treble clefs and a 2/4 time signature. The notation continues with complex rhythmic patterns of eighth and sixteenth notes.

76. | 

77. | 

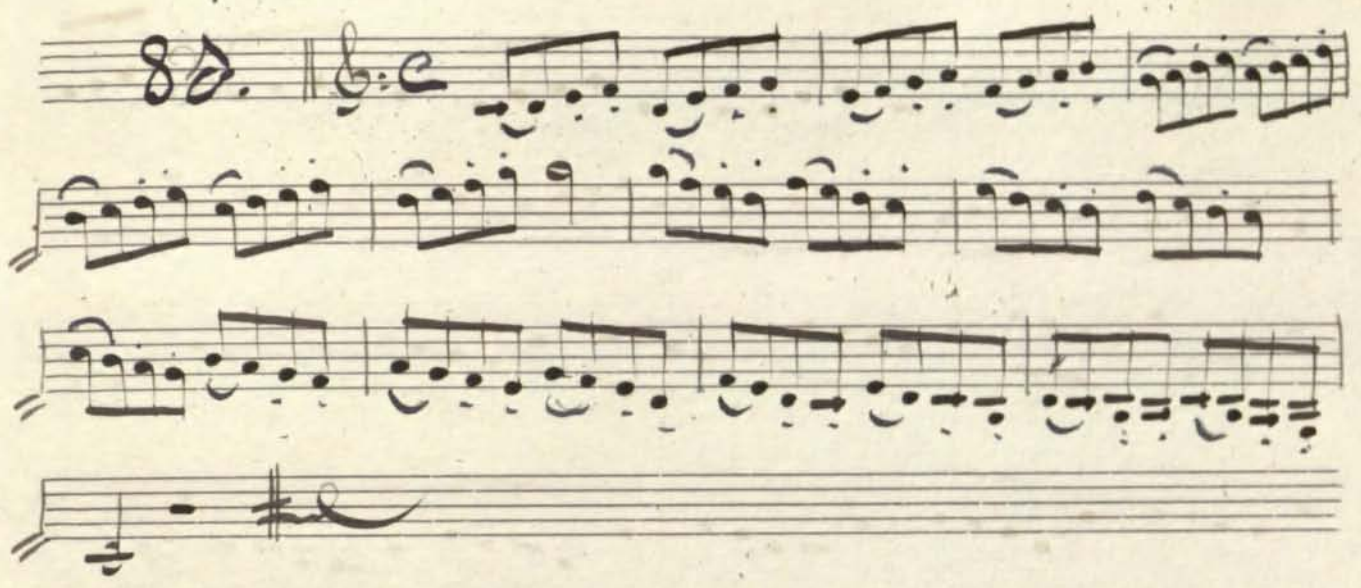
molto.
78. | 

Handwritten musical notation on two staves. The first staff contains a sequence of eighth and sixteenth notes with beams, typical of a technical exercise. The second staff continues the notation with similar rhythmic patterns.

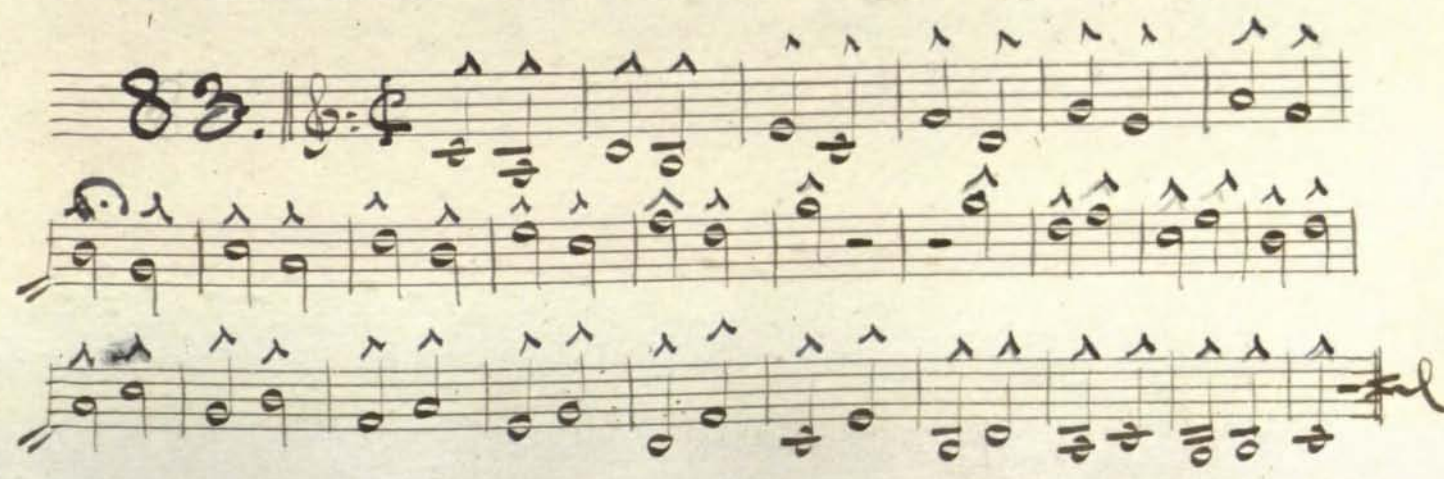
Ejercicios de *Allegro*

79.
 Handwritten musical notation for exercise 79. It begins with a treble clef and a 6/8 time signature. The exercise consists of ten staves of music, primarily using quarter and eighth notes. The notation is clear and legible, showing a progression of rhythmic and melodic ideas. The piece concludes with a double bar line and a fermata-like flourish.

80.

80. || 

82. || 

83. || 

84. **84.** This block contains the first system of handwritten musical notation, labeled '84.'. It consists of four staves. The first staff begins with a treble clef and a 3/4 time signature. The music is written in a single melodic line with various note values and rests. The second and third staves continue the melodic line with similar notation. The fourth staff concludes the system with a double bar line and a fermata.

85. **85.** This block contains the second system of handwritten musical notation, labeled '85.'. It consists of four staves. The first staff begins with a treble clef and a 3/4 time signature. The music is written in a single melodic line with various note values and rests. The second and third staves continue the melodic line with similar notation. The fourth staff concludes the system with a double bar line and a fermata.

86. **86.** This block contains the third system of handwritten musical notation, labeled '86.'. It consists of four staves. The first staff begins with a treble clef and a 3/4 time signature. The music is written in a single melodic line with various note values and rests. The second and third staves continue the melodic line with similar notation. The fourth staff concludes the system with a double bar line and a fermata.

87.

88.

89.

90.

91.

92.

Handwritten musical notation on three staves. The first staff contains a melodic line with eighth and sixteenth notes. The second staff contains a similar melodic line. The third staff contains a bass line with chords and a double bar line.

Handwritten musical notation on four staves. The first staff starts with a treble clef and a 3/4 time signature. The second and third staves contain melodic lines with eighth notes. The fourth staff contains a bass line with chords and a double bar line.

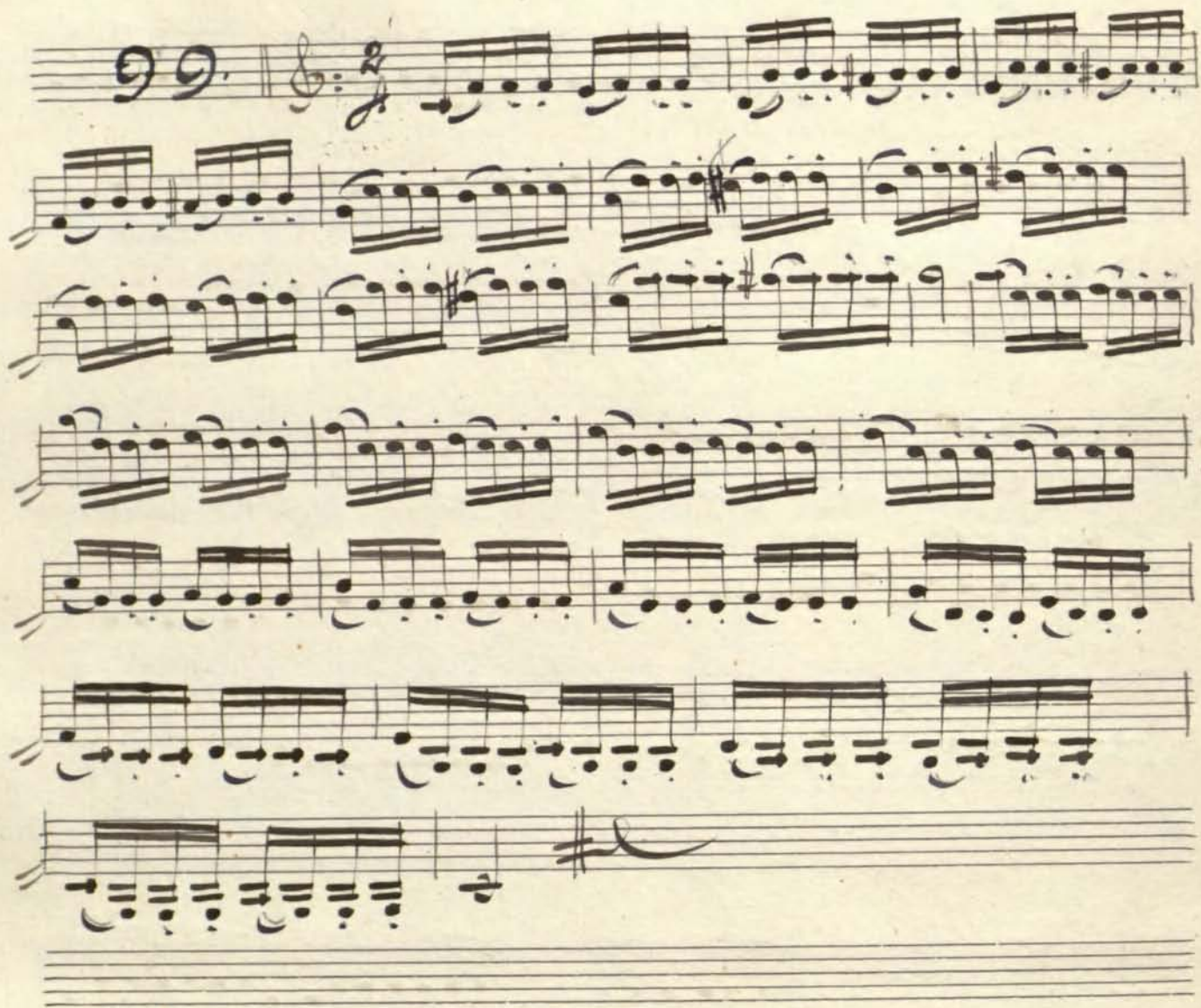
Handwritten musical notation on three staves. The first staff starts with a treble clef and a 3/4 time signature. The second and third staves contain melodic lines with eighth notes. The third staff contains a bass line with chords and a double bar line.

95. || C 

96. || $\frac{2}{4}$ 

97. 

98. 

99. | 

100. | 

Handwritten musical score for the first system, consisting of six staves of music. The notation is in treble clef with a 3/4 time signature. It features complex rhythmic patterns with many beamed eighth and sixteenth notes, typical of a technical exercise or a fast-paced piece.

Handwritten musical score for the second system, consisting of six staves of music. The notation continues with similar rhythmic complexity as the first system, featuring dense passages of beamed notes and rests.

Handwritten musical score for a piece labeled "Op. 2". The score is written in treble clef with a 2/4 time signature. It consists of a single melodic line on a five-line staff, featuring a series of eighth and sixteenth notes, often beamed together in groups. The notation includes various rhythmic values and rests, with some notes marked with accents. The piece concludes with a double bar line and a fermata over the final note.

Handwritten musical score for a piece labeled "Op. 4". The score is written in treble clef with a 2/4 time signature. It consists of a single melodic line on a five-line staff, featuring a series of eighth and sixteenth notes, often beamed together in groups. The notation includes various rhythmic values and rests, with some notes marked with accents. The piece concludes with a double bar line and a fermata over the final note.

205. |> 2/4

206 |> 3/4

207. || Musical notation for exercise 207, measures 1-5. The piece is in 3/4 time and G major. It features a treble clef and a key signature of one sharp (F#). The melody is written on a single staff, and the accompaniment is on a grand staff (treble and bass clefs). The notation includes various note values, rests, and phrasing slurs.

208. || Musical notation for exercise 208, measures 1-5. The piece is in 3/4 time and G major. It features a treble clef and a key signature of one sharp (F#). The melody is written on a single staff, and the accompaniment is on a grand staff (treble and bass clefs). The notation includes various note values, rests, and phrasing slurs.

209. || Musical notation for exercise 209, measures 1-2. The piece is in 3/4 time and G major. It features a treble clef and a key signature of one sharp (F#). The notation includes various note values, rests, and phrasing slurs.

The first system of the handwritten musical score consists of six staves. The notation includes various note values such as eighth and sixteenth notes, often beamed together. There are also rests and some slurs. The music appears to be in a common time signature, though it is not explicitly written at the beginning of this system.

The second system of the handwritten musical score begins with a treble clef, a 2/4 time signature, and a key signature of one sharp (F#). The notation is highly rhythmic, featuring numerous triplets and slurs. The notes are often beamed together in groups, and there are many accidentals throughout. The system concludes with a double bar line and a sharp sign indicating the end of the piece.

Handwritten musical score, first system. The music is written on five staves. The first staff begins with a treble clef, a 2/4 time signature, and a key signature of one sharp (F#). The notation includes various rhythmic values, including eighth and sixteenth notes, and rests. There are several triplets and slurs throughout the system. The system concludes with a double bar line and a sharp sign (#) on the fifth staff.

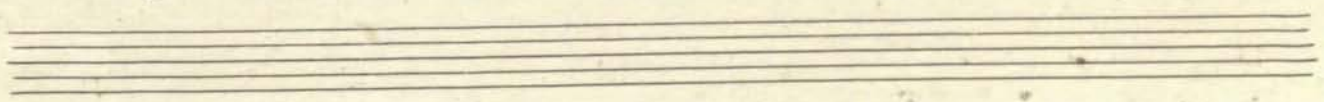
Handwritten musical score, second system. The music is written on ten staves. The first staff begins with a treble clef, a 3/4 time signature, and a key signature of one sharp (F#). The notation includes various rhythmic values, including eighth and sixteenth notes, and rests. There are several triplets and slurs throughout the system. The system concludes with a double bar line.

Copyright © Real Conservatorio Superior de Música de Madrid. Información sobre copyright - bibliotecas@rcsmm.eu
 Copyright © Madrid's Royal Music Conservatory. Information about copyright - bibliotecas@rcsmm.eu
 RCSMM - REAL CONSERVATORIO SUPERIOR DE MÚSICA DE MADRID

Ejercicios de $\underline{5}^{\text{a}}$.

A handwritten musical score for guitar, consisting of 14 staves. The first staff begins with a treble clef, a 2/4 time signature, and a key signature of one sharp (F#). The notation includes various rhythmic values such as quarter notes, eighth notes, and sixteenth notes, along with rests and slurs. The piece concludes with a double bar line and a sharp sign indicating the end of the exercise.

Handwritten musical score for a piece in 4/4 time. The notation includes treble clef, a key signature of one flat (B-flat), and various rhythmic values such as eighth and sixteenth notes. A small 'x' is written above the first staff. The piece concludes with a double bar line and a sharp sign.



Handwritten musical score for a piece in 3/4 time. The notation includes treble clef, a key signature of one flat (B-flat), and various rhythmic values. The piece concludes with a double bar line and a sharp sign. The initials "Y.P." are written at the end of the second staff.

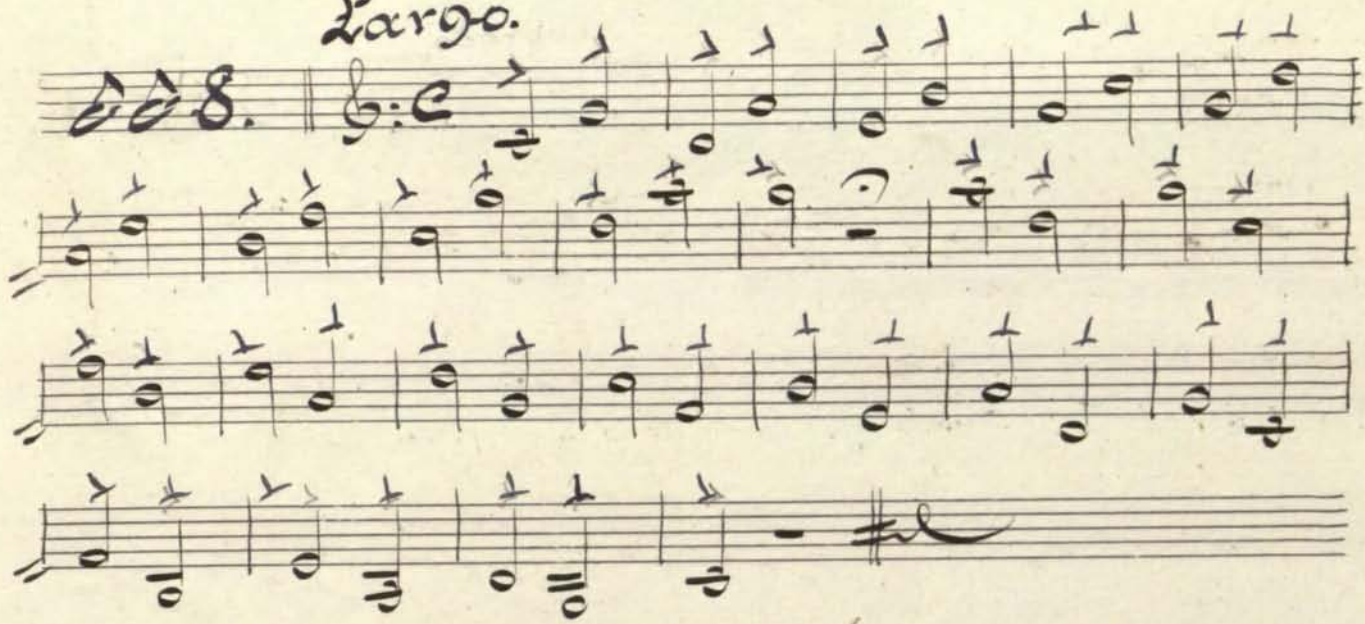
Handwritten musical notation on three staves. The first staff contains a melodic line with eighth and sixteenth notes. The second staff continues the melody. The third staff features a bass line with chords and a final cadence.

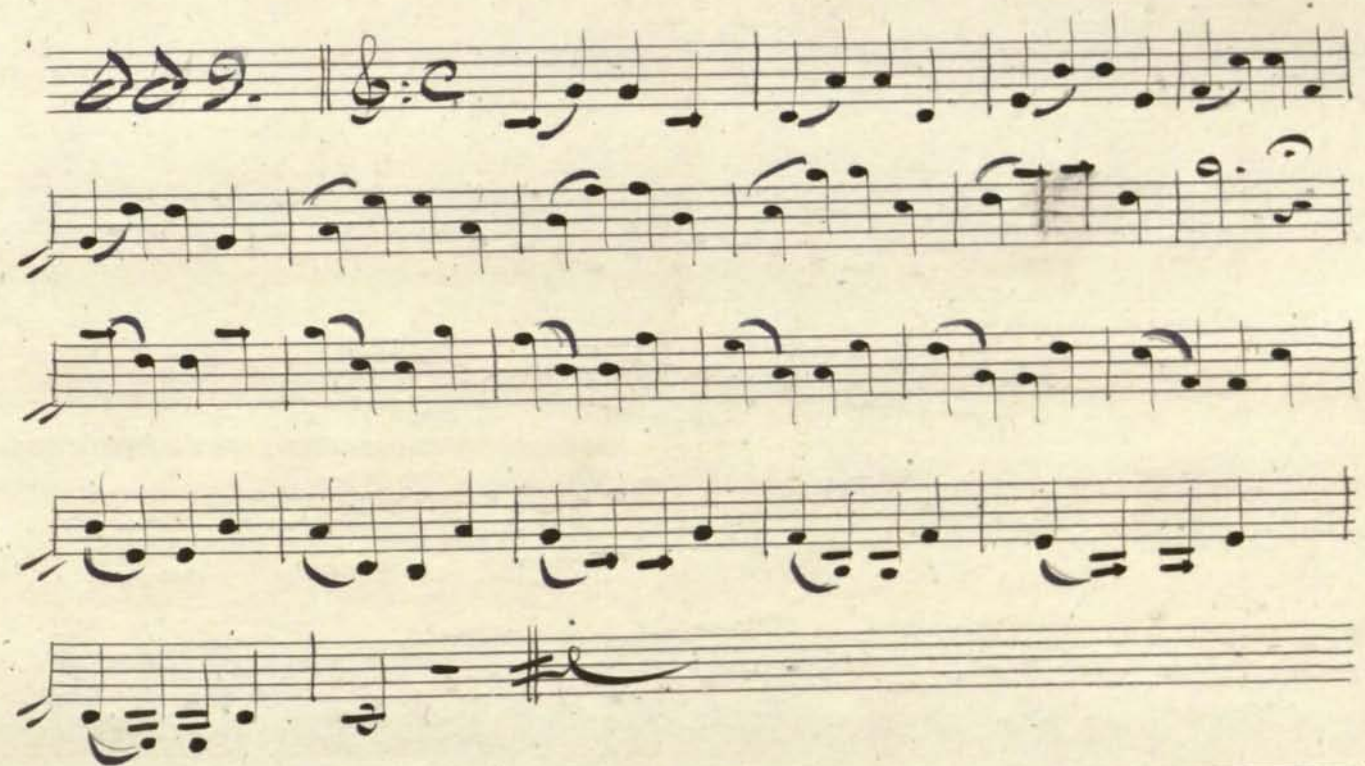
A set of three empty musical staves.

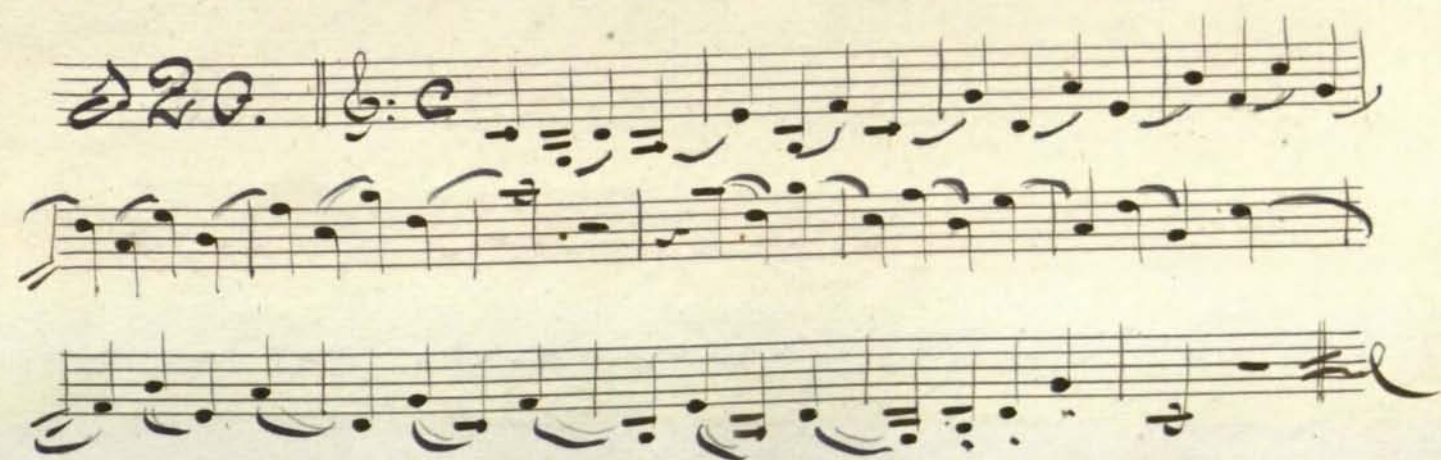
Handwritten musical notation on ten staves. The first staff begins with a treble clef, a 3/4 time signature, and a key signature of one sharp (F#). The notation includes various note values, rests, and phrasing slurs. The final staff concludes with a double bar line and a sharp sign.

A set of three empty musical staves.

Largo.

228. 

229. 

220. 

Handwritten musical score for the first system. It begins with a treble clef, a 2/2 time signature, and a key signature of one flat. The music is written on five staves. The first staff contains a series of eighth notes with slurs and accents. The second and third staves feature more complex rhythmic patterns, including triplets and sixteenth notes. The fourth and fifth staves continue the melodic line with various articulations and slurs.

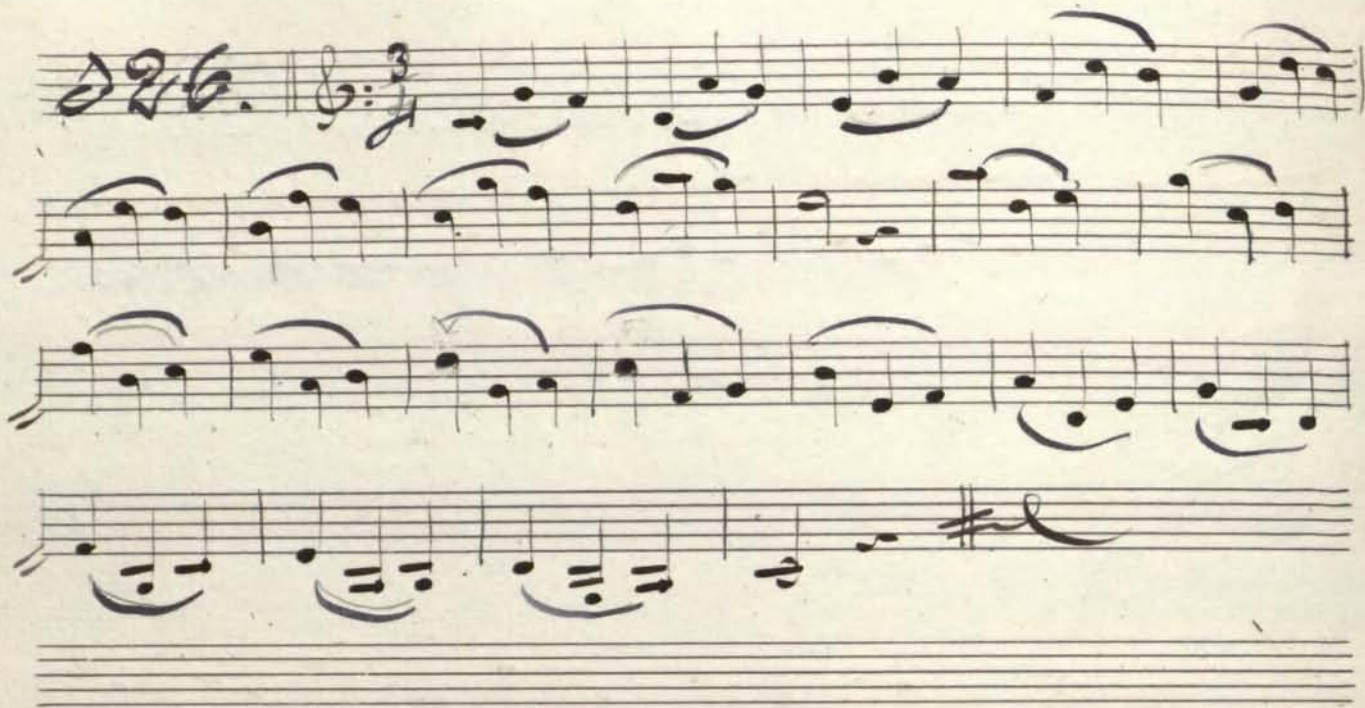
Handwritten musical score for the second system. It begins with a treble clef, a 3/4 time signature, and a key signature of one flat. The music is written on five staves. The first staff contains a series of eighth notes with slurs and accents. The second and third staves feature more complex rhythmic patterns, including triplets and sixteenth notes. The fourth and fifth staves continue the melodic line with various articulations and slurs.

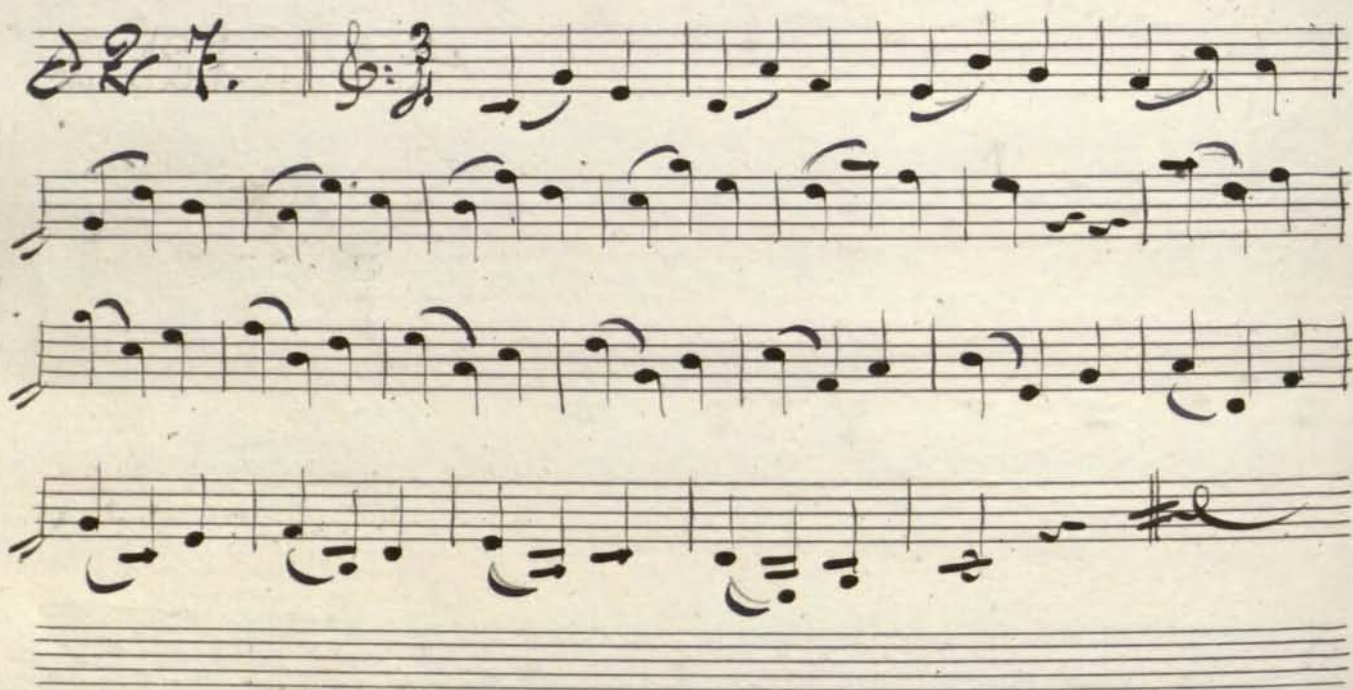
Handwritten musical score for the third system. It begins with a treble clef, a 3/4 time signature, and a key signature of one flat. The music is written on two staves. The first staff contains a series of eighth notes with slurs and accents. The second staff continues the melodic line with various articulations and slurs.

Handwritten musical notation for the first system, consisting of three staves. The top staff features a melodic line with eighth and sixteenth notes, some beamed together. The middle staff contains a similar melodic line, and the bottom staff shows a bass line with chords and single notes. The system concludes with a double bar line and a fermata.

Handwritten musical notation for the second system, starting with a treble clef and a 2/4 time signature. It consists of four staves. The first staff begins with a double bar line and a fermata. The subsequent staves contain a complex melodic and harmonic texture with many beamed notes. The system ends with a double bar line and a fermata.

Handwritten musical notation for the third system, starting with a treble clef and a 3/4 time signature. It consists of five staves. The first staff begins with a double bar line and a fermata. The music continues with intricate melodic patterns and rhythmic figures across all staves. The system concludes with a double bar line and a fermata.

226. 

227. 

228. 

229.

230.

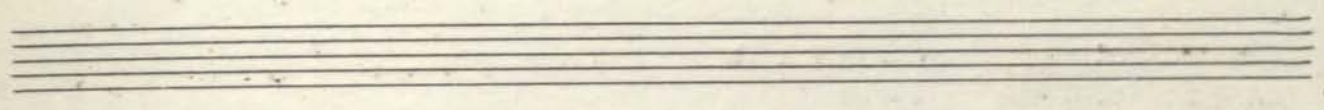
231.

Copyright © Real Conservatorio Superior de Música de Madrid. Información sobre copyright - biblioteca@rcsmm.eu
 Copyright © Madrid's Royal Music Conservatory. Information about copyright - biblioteca@rcsmm.eu
 RCMM - REAL CONSERVATORIO SUPERIOR DE MÚSICA DE MADRID

Handwritten musical score for the first system. It begins with a treble clef and a 2/4 time signature. The first staff contains a key signature of one sharp (F#) and a series of rhythmic figures. The subsequent five staves continue the melodic and harmonic development with various note values, rests, and accidentals. The system concludes with a double bar line and a fermata.

Handwritten musical score for the second system, which is a duplicate of the first system. It features the same notation, including the treble clef, 2/4 time signature, and six staves of music with various rhythmic patterns and accidentals, ending with a double bar line and a fermata.

Handwritten musical notation for the first system, consisting of three staves. The first staff begins with a treble clef and a 3/4 time signature. The music features a melodic line with eighth and sixteenth notes, and a bass line with similar rhythmic patterns.



Handwritten musical notation for the second system, consisting of six staves. The first staff begins with a treble clef and a 3/4 time signature. The notation is dense, with many beamed notes and rests, indicating a complex rhythmic texture.

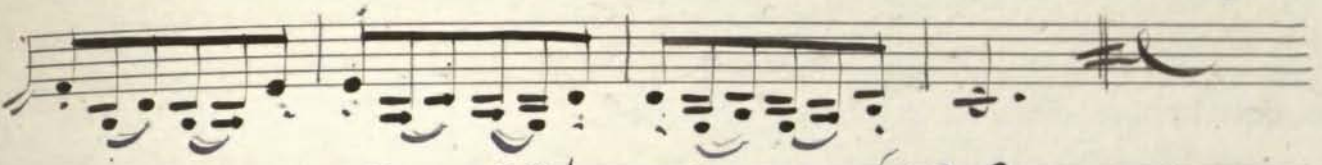
Handwritten musical notation for the third system, consisting of three staves. The first staff begins with a treble clef and a 3/4 time signature. The notation continues with complex rhythmic patterns. The system concludes with the signature 'V. Pto' and a double bar line.

Molto

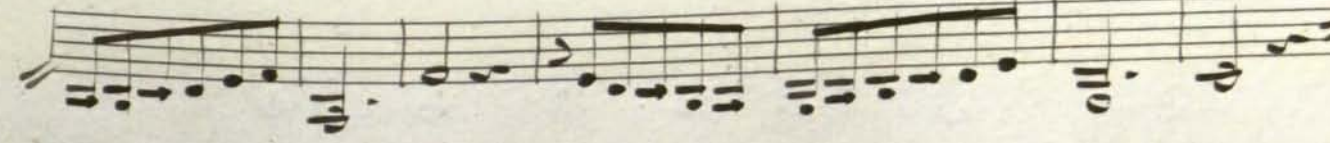
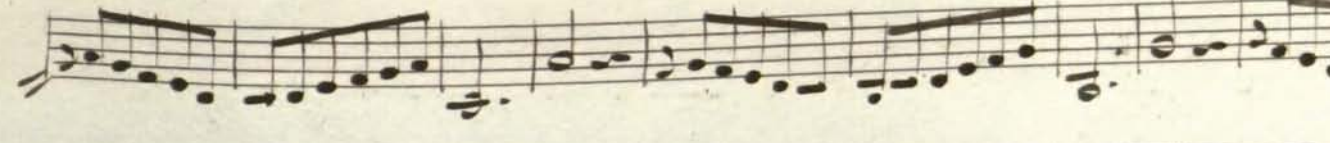
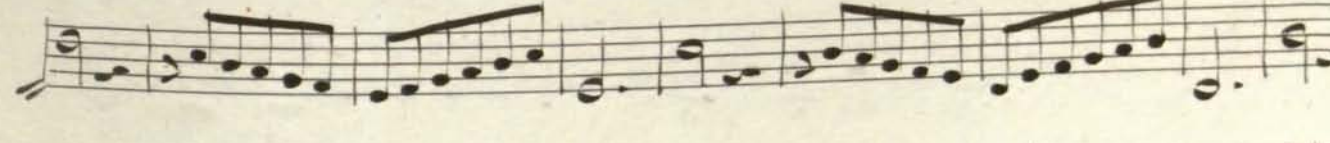
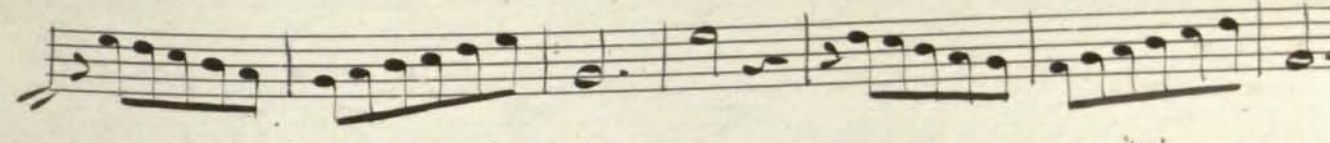
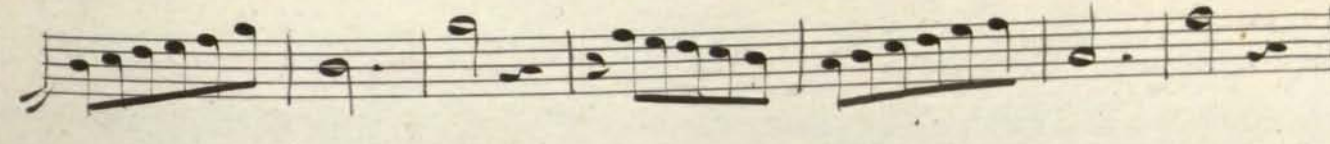
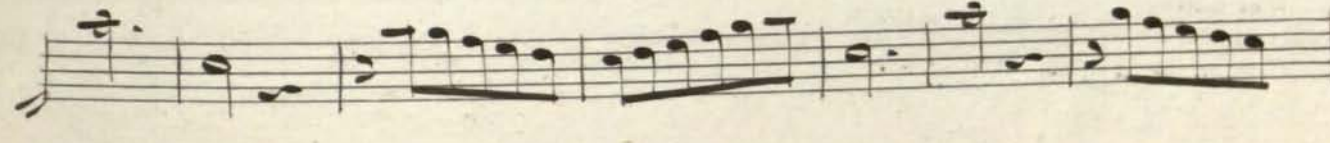
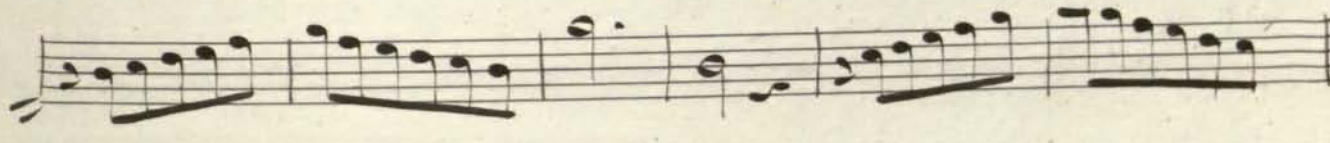
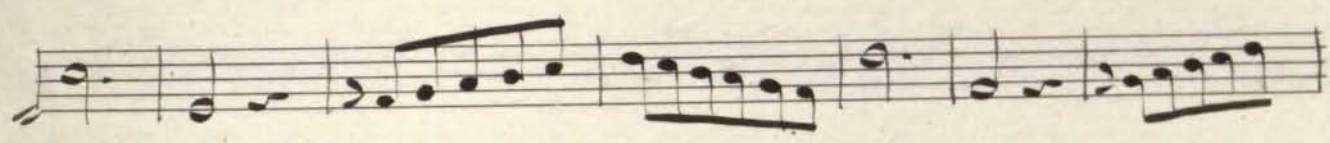
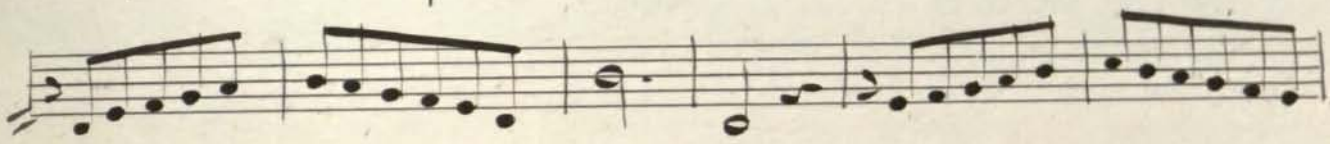
Handwritten musical score for three staves. The first staff is in treble clef, and the second and third are in bass clef. The key signature is one sharp (F#) and the time signature is 2/4. The notation includes various note values, rests, and slurs.

Handwritten musical score for six staves. The first staff is in treble clef, and the second through sixth are in bass clef. The key signature is one sharp (F#) and the time signature is 2/4. The notation includes various note values, rests, and slurs.

Handwritten musical score for three staves. The first staff is in treble clef, and the second and third are in bass clef. The key signature is one sharp (F#) and the time signature is 2/4. The notation includes various note values, rests, and slurs.



2º ejercicio de 6^{ta} = desjones del que sigue =



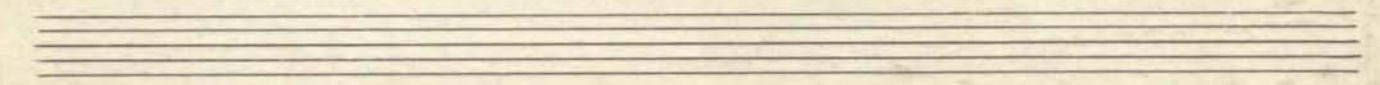
Handwritten musical score on 15 staves. The first staff has a treble clef, a key signature of one sharp (F#), and a common time signature (C). The music consists of a single melodic line with various note values including quarter, eighth, and sixteenth notes, as well as rests. The notation is in a cursive, handwritten style typical of 18th or 19th-century manuscripts.

Handwritten musical score for the first system. It begins with a treble clef, a key signature of one sharp (F#), and a 3/4 time signature. The notation consists of five staves of music, featuring a variety of note values including eighth and sixteenth notes, as well as rests and slurs. The handwriting is in a cursive style.

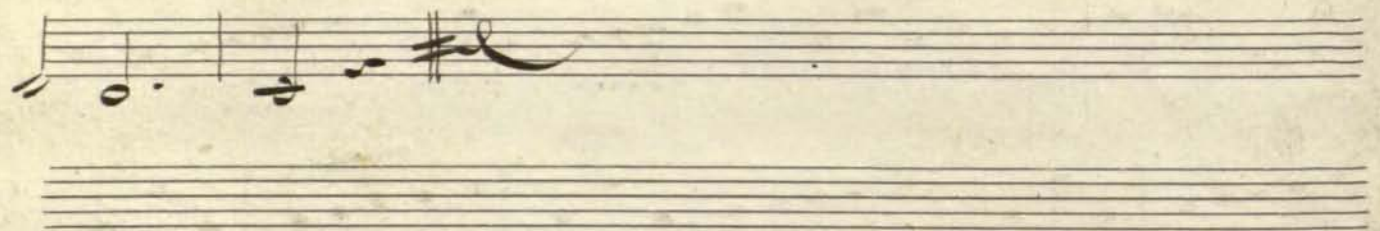
Handwritten musical score for the second system, continuing from the first. It also starts with a treble clef, a key signature of one sharp (F#), and a 3/4 time signature. This system contains seven staves of music, maintaining the same notation style and complexity as the first system.

Copyright © Real Conservatorio Superior de Música de Madrid. Información sobre copyright - biblioteca@rcsmm.es
 Copyright © Madrid's Royal Music Conservatory. Information about copyright - biblioteca@rcsmm.es
 RCSSM / REAL CONSERVATORIO SUPERIOR DE MÚSICA DE MADRID

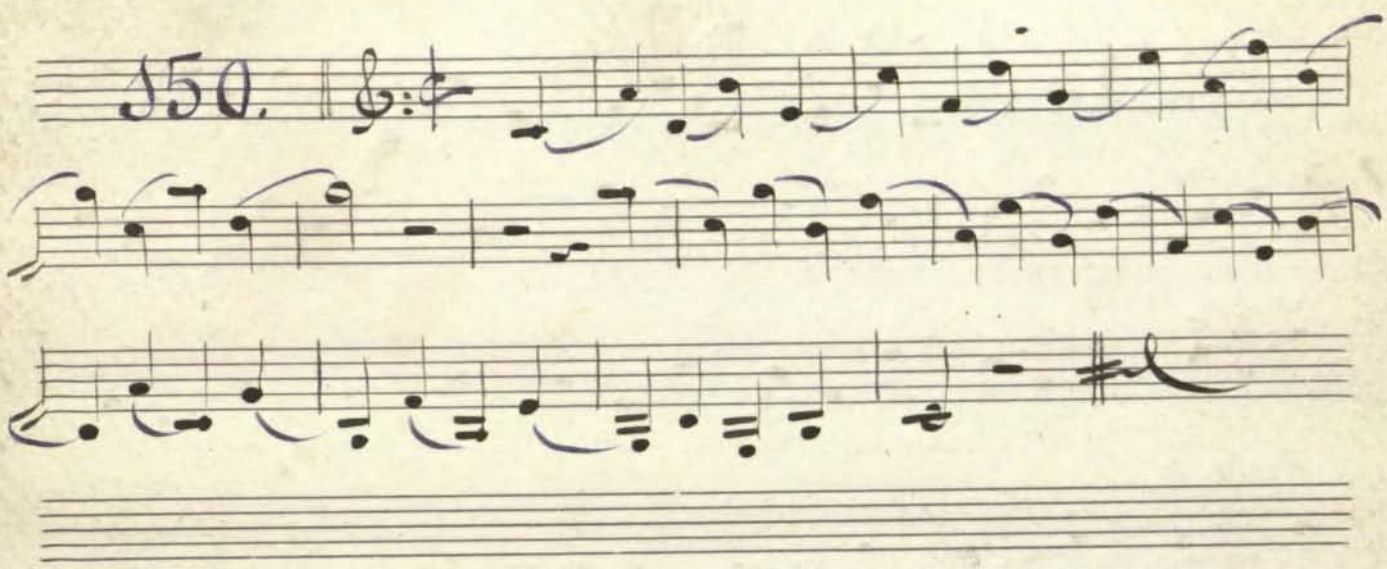
Handwritten musical score, first system. It consists of four staves. The first staff begins with a treble clef, a key signature of one sharp (F#), and a time signature of 3/4. The music is written in a cursive style with various note values and rests.



Handwritten musical score, second system. It consists of four staves. The first staff begins with a treble clef, a key signature of one sharp (F#), and a time signature of 3/4. The notation continues with various rhythmic patterns and note values.



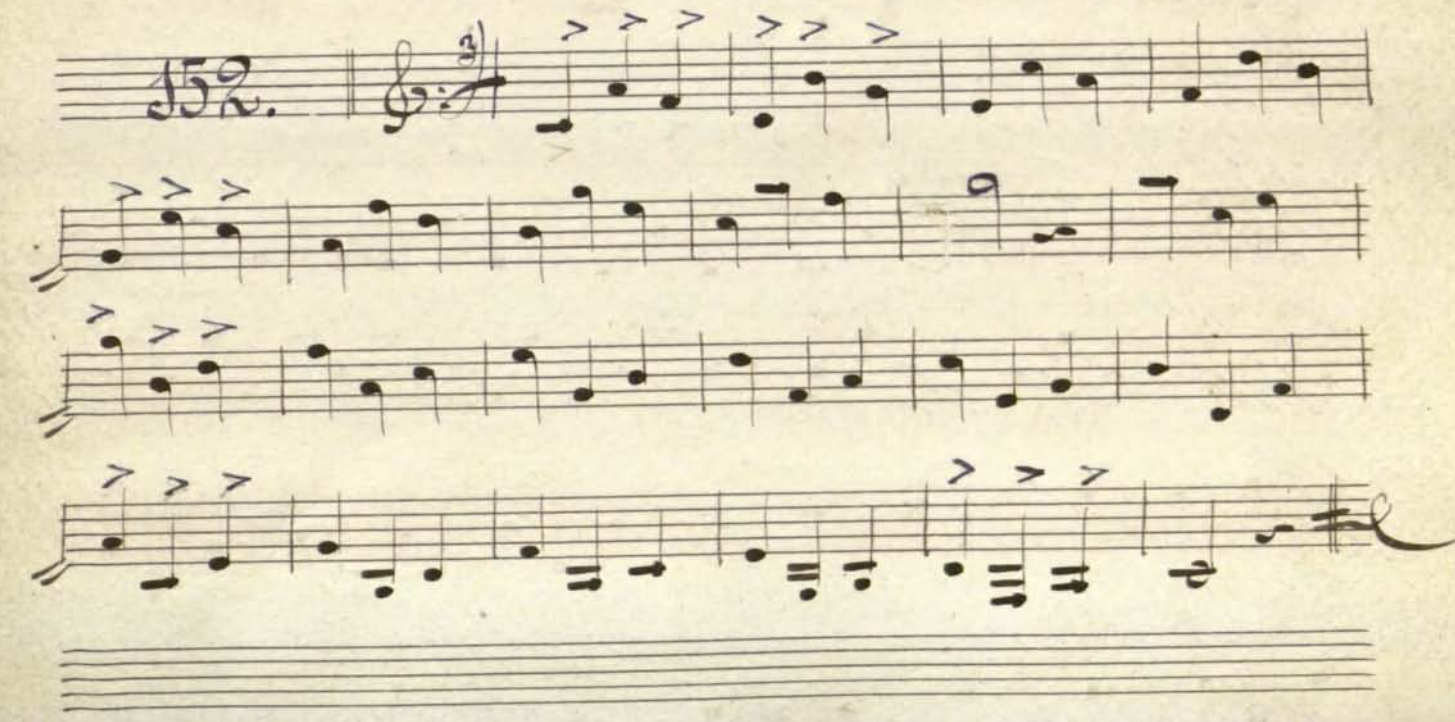
Handwritten musical score, third system. It consists of three staves. The first staff begins with a treble clef, a key signature of one sharp (F#), and a time signature of 4/4. The notation includes various note values and rests, with some notes marked with '7' above them.

150. 

Handwritten musical score for exercise 150. It begins with a treble clef and a 4/4 time signature. The first staff contains a melodic line with eighth and sixteenth notes. The second staff continues the melody with some rests. The third staff shows a bass line with eighth notes and rests. The piece concludes with a double bar line and a sharp sign on the bottom line of the staff.

151. 

Handwritten musical score for exercise 151. It starts with a treble clef and a 4/4 time signature. The notation is characterized by numerous accents (>) over the notes. The first staff has a melodic line with accents. The second and third staves continue the piece with similar accented patterns. The piece ends with a double bar line and a sharp sign on the bottom line.

152. 

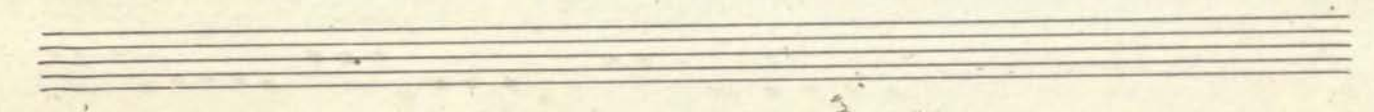
Handwritten musical score for exercise 152. It begins with a treble clef and a 4/4 time signature. The notation features many accents (>) over the notes. The first staff shows a melodic line with accents. The second and third staves continue the piece with similar accented patterns. The piece concludes with a double bar line and a sharp sign on the bottom line.

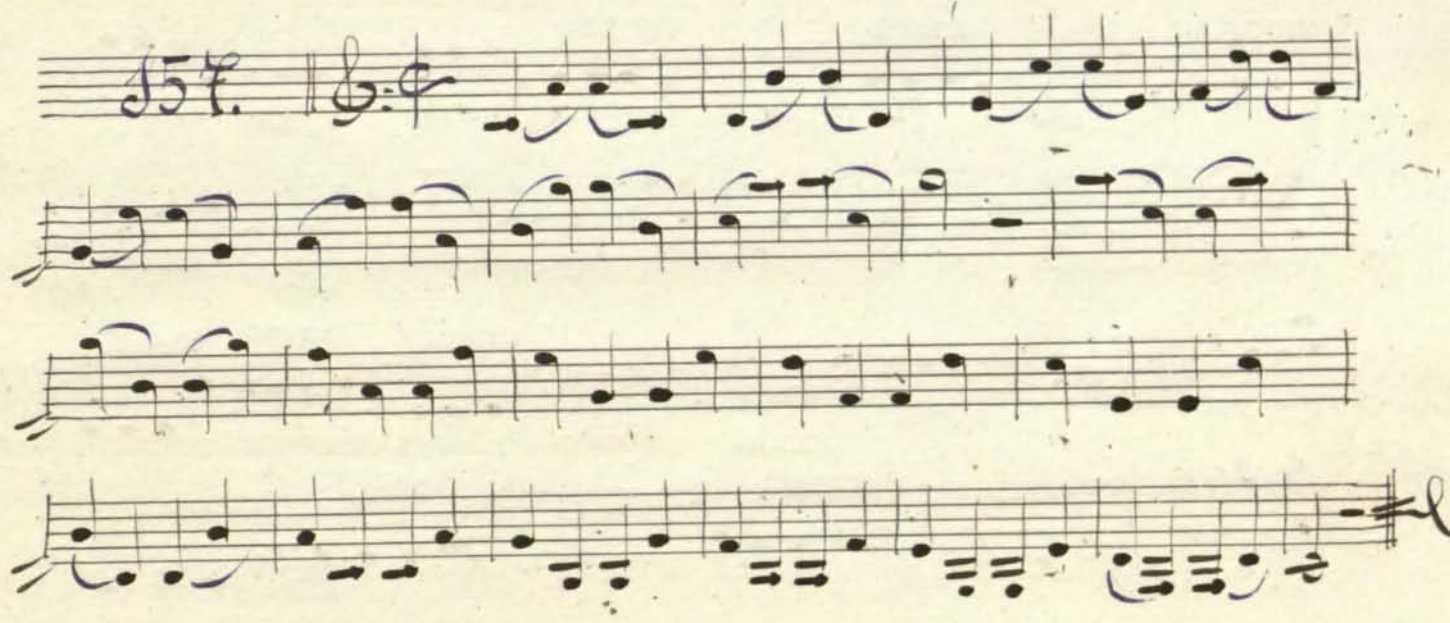
153.

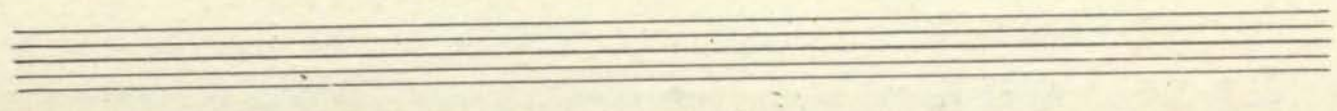
154.

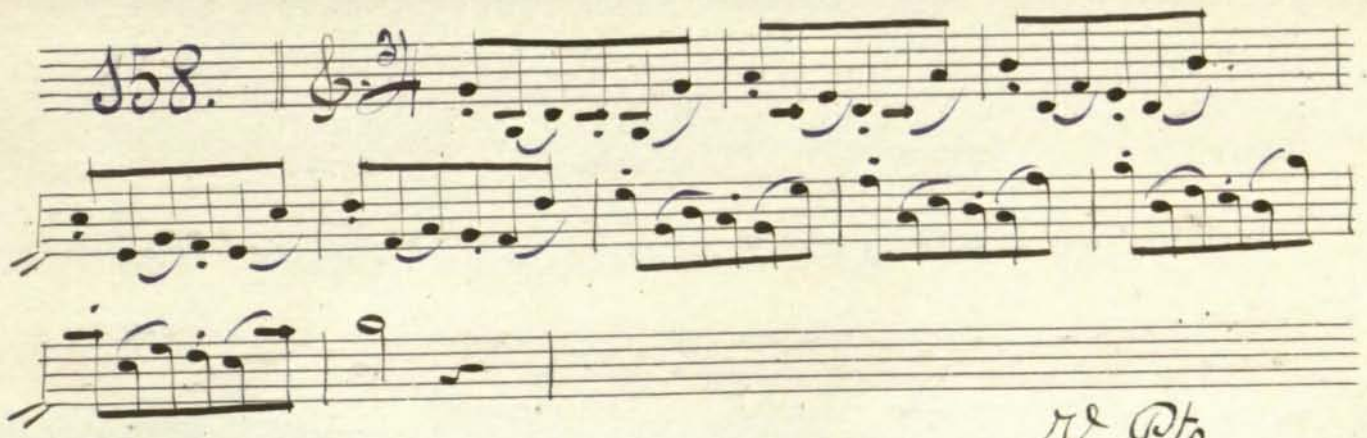
155.

156. 

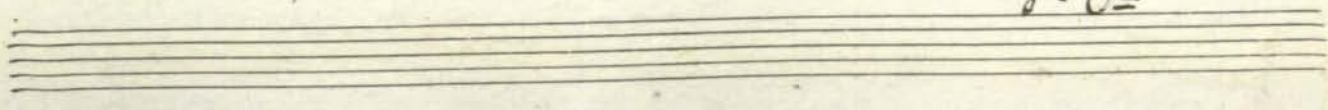


157. 



158. 

J. Pto



Handwritten musical score for measures 157-160. The score is written on three staves. The first two staves contain a melodic line with eighth and sixteenth notes, and the third staff contains a bass line with similar rhythmic values. The notation is in a cursive style typical of 18th or 19th-century manuscripts.

159

Handwritten musical score for measures 159-163. The score is written on six staves. The first staff is the treble clef with a 2/4 time signature. The following four staves contain a complex texture of sixteenth-note patterns, likely for a keyboard instrument. The sixth staff is the bass line. The notation is in a cursive style.

160

Handwritten musical score for measures 160-164. The score is written on three staves. The first staff is the treble clef with a 2/4 time signature. The following two staves contain a complex texture of sixteenth-note patterns, likely for a keyboard instrument. The notation is in a cursive style.

361.

362.

V. Peto

Handwritten musical score for exercise 263, measures 1-4. The score is written on three staves. The first staff contains the melody, the second staff contains a counter-melody or accompaniment, and the third staff contains a bass line. The music is in 2/4 time and features a variety of rhythmic patterns, including eighth and sixteenth notes, and rests.

263. Handwritten musical score for exercise 263, measures 5-8. The score is written on three staves. The first staff contains the melody, the second staff contains a counter-melody or accompaniment, and the third staff contains a bass line. The music is in 2/4 time and features a variety of rhythmic patterns, including eighth and sixteenth notes, and rests.

264. Handwritten musical score for exercise 264, measures 1-4. The score is written on three staves. The first staff contains the melody, the second staff contains a counter-melody or accompaniment, and the third staff contains a bass line. The music is in 2/4 time and features a variety of rhythmic patterns, including eighth and sixteenth notes, and rests.

Handwritten musical score for measures 64-65. The first two staves show a melodic line with eighth and sixteenth notes. The third staff shows a bass line with a double bar line and a fermata.

65.

Handwritten musical score for measures 65-71. The first staff has a treble clef and a 2/4 time signature. The music continues with various rhythmic patterns across six staves.

2^{as}

66.

Handwritten musical score for measures 71-75. The first staff has a treble clef and a 2/4 time signature. The music continues with various rhythmic patterns across three staves.

V. P^{ta}

The first system of the handwritten musical score consists of four staves. The top two staves appear to be a vocal line, featuring a melodic line with various note values and rests. The bottom two staves appear to be a piano accompaniment, with a rhythmic pattern of eighth and sixteenth notes. The notation is in a cursive, handwritten style.

The second system of the handwritten musical score consists of seven staves. The first staff begins with the handwritten number '567.' and a treble clef. Above the first few notes of this staff, there is a handwritten number '204'. The music continues with a melodic line on the top staff and a piano accompaniment on the subsequent staves. The notation is consistent with the first system, showing a continuation of the piece.

3^a

2^{as}

Handwritten musical score for exercise 268. The score is written on seven staves. It begins with the number '268.' and a treble clef with a 2/4 time signature. The music consists of a series of rhythmic patterns, primarily eighth and sixteenth notes, with some rests and dynamic markings. The piece concludes with a double bar line and a fermata.

4^{as}

Handwritten musical score for exercise 269. The score is written on seven staves. It begins with the number '269' and a treble clef with a 2/4 time signature. The music features a variety of rhythmic patterns, including eighth, sixteenth, and thirty-second notes, with frequent beaming. The piece ends with a double bar line and a fermata.

5as

Handwritten musical score for the first section, labeled "5as". It begins with a treble clef, a 2/4 time signature, and a tempo marking of "Allegro". The music consists of ten staves of rhythmic patterns, primarily eighth and sixteenth notes, with some rests and dynamic markings.

6as

Handwritten musical score for the second section, labeled "6as". It begins with a treble clef and a common time signature (C). The music consists of ten staves of rhythmic patterns, primarily eighth and sixteenth notes, with many triplets and slurs. The piece concludes with a double bar line and a circled cross symbol.

Articulaciones Sol Ejercicio
 122 172.

6^{as}

Handwritten musical score for the first system, numbered 672. It consists of five staves of music in treble clef, 3/4 time signature. The notation includes various rhythmic values such as eighth and sixteenth notes, often beamed together. The piece concludes with a double bar line and a sharp sign.

6^{as}

Handwritten musical score for the second system, numbered 673. It consists of seven staves of music in treble clef, 3/4 time signature. This system features prominent triplet markings (indicated by a '3' in a circle) over several measures. The notation includes eighth and sixteenth notes. The piece concludes with a double bar line and a sharp sign.

7^o

Handwritten musical score for exercise 7, measures 1-10. The notation is in treble clef with a key signature of one sharp (F#) and a 3/4 time signature. The music consists of a single melodic line with various rhythmic patterns, including eighth and sixteenth notes, and rests. There are several slurs and ties throughout the piece.

Ejercicios de 7^o.

Handwritten musical score for exercise 7, measures 11-20. The notation is in treble clef with a key signature of one sharp (F#) and a 3/4 time signature. The music continues with a single melodic line, featuring more complex rhythmic patterns and slurs. The piece concludes with a final cadence.

Handwritten musical notation on a single staff. It begins with a treble clef, a common time signature (C), and a key signature of one flat (B-flat). The notation includes a series of notes and rests, with some notes marked with a 'p' (piano).

Handwritten musical notation on a single staff, continuing the piece with various note values and rests.

Handwritten musical notation on a single staff, continuing the piece with various note values and rests.

Handwritten musical notation on a single staff, continuing the piece with various note values and rests.

Handwritten musical notation on a single staff, continuing the piece with various note values and rests.

Handwritten musical notation on a single staff, continuing the piece with various note values and rests.

Handwritten musical notation on a single staff, continuing the piece with various note values and rests.

Handwritten musical notation on a single staff, continuing the piece with various note values and rests.

Handwritten musical notation on a single staff, continuing the piece with various note values and rests.

Handwritten musical notation on a single staff, continuing the piece with various note values and rests.

Handwritten musical notation on a single staff, continuing the piece with various note values and rests.

Handwritten musical notation on a single staff, continuing the piece with various note values and rests.

Four empty musical staves at the bottom of the page, indicating the end of the written music on this page.

77. | 3/4

Handwritten musical score for exercise 77. It begins with a treble clef and a 3/4 time signature. The first staff contains a treble clef, the number '77.', and a repeat sign. The music consists of seven staves of notes, primarily quarter and eighth notes, with various slurs and phrasing marks. The piece concludes with a double bar line and a sharp sign.

78. | 2/4

Handwritten musical score for exercise 78. It begins with a treble clef and a 2/4 time signature. The first staff contains a treble clef, the number '78.', and a repeat sign. The music consists of five staves of notes, primarily quarter and eighth notes, with various slurs and phrasing marks. The piece concludes with a double bar line and a sharp sign.

279. | &: 4/4

This block contains the handwritten musical score for exercise 279. It begins with a treble clef and a 4/4 time signature. The notation is spread across five staves. The first staff contains the number '279.' followed by a double bar line and the key signature. The music consists of a series of eighth and sixteenth notes, often beamed together in groups. The piece concludes with a double bar line and a sharp sign indicating the end of the exercise.

280. | &: 4/4

This block contains the handwritten musical score for exercise 280. It starts with a treble clef and a 4/4 time signature. The notation is spread across three staves. The music is characterized by a steady rhythm of quarter notes, with some eighth notes and rests. The piece ends with a double bar line and a sharp sign.

281. | &: 4/4

This block contains the handwritten musical score for exercise 281. It begins with a treble clef and a 4/4 time signature. The notation is spread across three staves. The music features a mix of eighth and sixteenth notes, with some beaming and slurs. The exercise concludes with a double bar line and a sharp sign.

Handwritten musical score, first system. It consists of four staves. The first staff begins with a treble clef, a key signature of one sharp (F#), and a 3/4 time signature. The music is written in a cursive hand. The first three staves contain the main melody, and the fourth staff contains a bass line. The system concludes with a double bar line and a fermata.

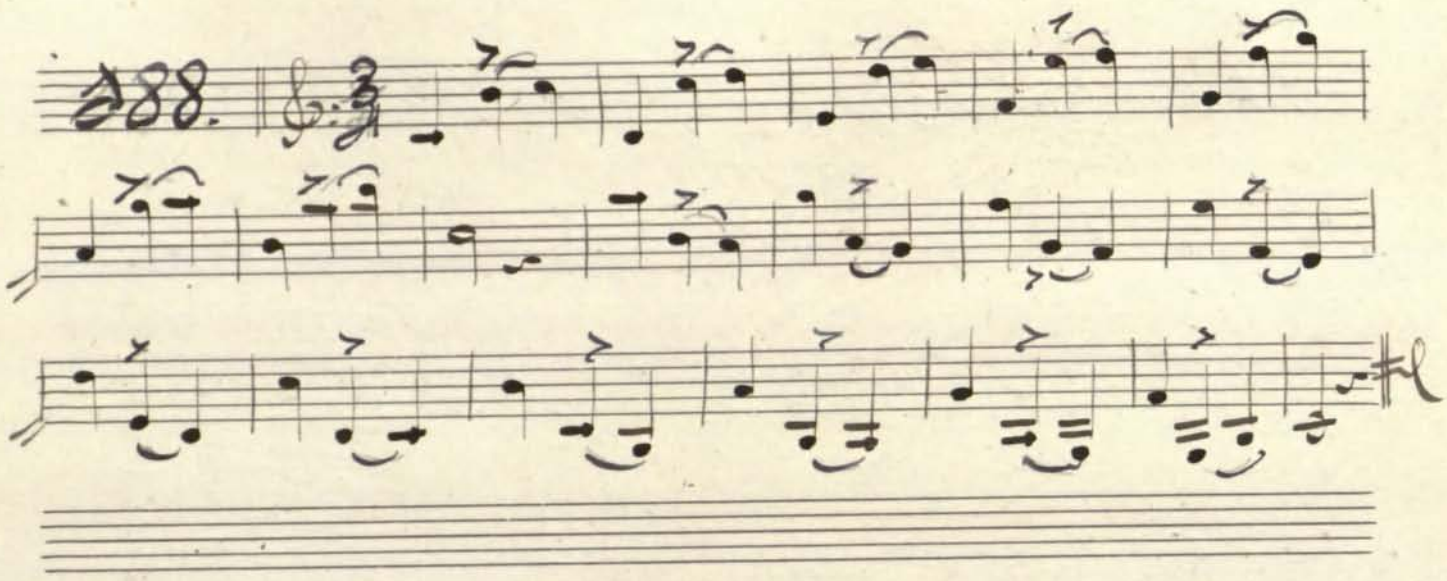
Handwritten musical score, second system. It consists of four staves, identical in notation to the first system. The first staff begins with a treble clef, a key signature of one sharp (F#), and a 3/4 time signature. The system concludes with a double bar line and a fermata.

Handwritten musical score, third system. It consists of four staves, identical in notation to the first system. The first staff begins with a treble clef, a key signature of one sharp (F#), and a 3/4 time signature. The system concludes with a double bar line and a fermata.

885.
 Handwritten musical notation for exercise 885. It consists of four staves. The first staff begins with a treble clef, a 3/4 time signature, and a key signature of one sharp (F#). The melody is written in a simple, rhythmic style with quarter and eighth notes. The second and third staves provide accompaniment with similar rhythmic patterns. The fourth staff concludes the exercise with a double bar line and a fermata.

886.
 Handwritten musical notation for exercise 886. It consists of three staves. The first staff begins with a treble clef, a 3/4 time signature, and a key signature of one sharp (F#). The melody is written in a simple, rhythmic style with quarter and eighth notes. The second and third staves provide accompaniment with similar rhythmic patterns. The third staff concludes the exercise with a double bar line and a fermata.

887.
 Handwritten musical notation for exercise 887. It consists of four staves. The first staff begins with a treble clef, a 3/4 time signature, and a key signature of one sharp (F#). The melody is written in a simple, rhythmic style with quarter and eighth notes. The second and third staves provide accompaniment with similar rhythmic patterns. The fourth staff concludes the exercise with a double bar line and a fermata.

288. 

289. 

290. 

Handwritten musical score, first system. It begins with a treble clef, a key signature of one sharp (F#), and a 3/4 time signature. The music consists of five staves of notation, featuring a melody with eighth and sixteenth notes, often beamed together, and a bass line with similar rhythmic patterns. The notation is fluid and characteristic of a working draft.

al P^o

Handwritten musical score, second system. It begins with a treble clef, a key signature of one sharp (F#), and a common time (C) signature. The music consists of six staves of notation. The melody is more active than in the first system, with frequent sixteenth-note passages and slurs. The bass line provides harmonic support with chords and moving lines. The notation is dense and expressive.

Handwritten musical score, first system. The music is written on a single staff in treble clef, common time (C), and begins with a tempo marking of *Andante*. The notation consists of a series of eighth and sixteenth notes, often beamed together in groups, with some rests. The piece concludes with a double bar line and a fermata.

Handwritten musical score, second system. The music is written on a single staff in treble clef, 3/4 time, and begins with a tempo marking of *Andante*. The notation consists of a series of eighth and sixteenth notes, often beamed together in groups, with some rests. The piece concludes with a double bar line and a fermata.

Handwritten musical score for measures 94-95. It consists of four staves of music. The first staff has a treble clef and a 2/4 time signature. The music is written in a single system with four staves. The notation includes various rhythmic values such as eighth and sixteenth notes, and rests.

Handwritten musical score for measures 96-97. It consists of six staves of music. The first staff has a treble clef and a 2/4 time signature. The music is written in a single system with six staves. The notation includes various rhythmic values such as eighth and sixteenth notes, and rests.

Handwritten musical score for measure 98. It consists of three staves of music. The first staff has a treble clef and a 2/4 time signature. The music is written in a single system with three staves. The notation includes various rhythmic values such as eighth and sixteenth notes, and rests. The piece concludes with the signature "y. pto".

Handwritten musical score for measures 94-97. The score consists of three staves. The first staff contains a treble clef and a key signature of one sharp (F#). The music is written in a 3/4 time signature. The notation includes eighth and sixteenth notes, often beamed together, and rests. The second and third staves continue the melodic and harmonic lines. The piece concludes with a double bar line and a fermata over the final note.

Handwritten musical score for measures 98-101. The score consists of four staves. The first staff begins with the measure number '98', a treble clef, and a key signature of one sharp (F#). The time signature is 3/4. The notation features a variety of rhythmic patterns, including eighth and sixteenth notes, and rests. The second and third staves continue the melodic and harmonic lines. The piece concludes with a double bar line and a fermata over the final note.

Handwritten musical score for measures 102-105. The score consists of two staves. The first staff begins with the measure number '102', a treble clef, and a key signature of one sharp (F#). The time signature is 3/4. The notation features a variety of rhythmic patterns, including eighth and sixteenth notes, and rests. The second staff continues the melodic and harmonic lines. The piece concludes with a double bar line and a fermata over the final note.

Handwritten musical notation for the first system, consisting of two staves. The notation includes various note values, rests, and phrasing slurs.

299. | 3/4

Handwritten musical notation for the second system, starting with the number 299 and a 3/4 time signature. It consists of two staves.

200. | 3/4

Handwritten musical notation for the third system, starting with the number 200 and a 3/4 time signature. It consists of two staves.

200. | 3/4

Handwritten musical notation for the fourth system, starting with the number 200 and a 3/4 time signature. It consists of two staves.

Ejercicios de 8^{as} = despues del que sigue. =

202. |&:C

203. |&:C

The first system of the handwritten musical score consists of six staves. The notation includes various note values such as quarter notes, eighth notes, and sixteenth notes, along with rests and dynamic markings like 'p' (piano). The music is written in a single system across the six staves.

The second system of the handwritten musical score begins with a treble clef, a 2/4 time signature, and a key signature of one sharp (F#). The notation is more complex, featuring many beamed notes, slurs, and dynamic markings. The system spans eight staves.

Handwritten musical score for three staves. The first staff begins with the number "205" and a treble clef. The music consists of rhythmic patterns of eighth and sixteenth notes, with some notes marked with accents. The piece concludes with a double bar line and a sharp sign.

Handwritten musical score for ten staves. The first staff begins with the number "206" and a treble clef. The music features a complex melodic line with many slurs and ties, indicating a continuous, flowing passage. The piece ends with a double bar line and a sharp sign.

207. $\text{G}\sharp$ C

208 $\text{G}\sharp$ C

209 $\text{G}\sharp$ C

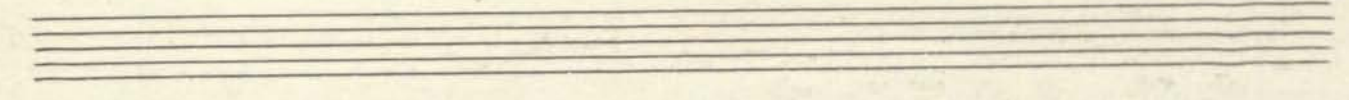
Copyright © Real Conservatorio Superior de Música de Madrid. Información sobre copyright - biblioteca@rcsmm.es
Copyright © Madrid's Royal Music Conservatory. Information about copyright - biblioteca@rcsmm.es
RCSMM | REAL CONSERVATORIO SUPERIOR DE MÚSICA DE MADRID

Handwritten musical score system 1. It consists of five staves. The first staff begins with a treble clef, a common time signature (C), and a key signature of one flat (B-flat). The notation includes various rhythmic values such as eighth and sixteenth notes, along with rests and dynamic markings like 'p' (piano) and 'f' (forte). The system concludes with a double bar line.

Handwritten musical score system 2. It consists of four staves. The first staff begins with a treble clef, a 3/4 time signature, and a key signature of one flat (B-flat). The notation features a mix of eighth and sixteenth notes, often beamed together, and includes dynamic markings such as 'p' and 'f'. The system ends with a double bar line.

Handwritten musical score system 3. It consists of three staves. The first staff begins with a treble clef, a 3/4 time signature, and a key signature of one flat (B-flat). The notation is characterized by frequent use of slurs and ties, indicating phrasing and melodic lines. The system concludes with a double bar line.

Handwritten musical notation on a system of three staves. The first staff begins with a treble clef, a key signature of one sharp (F#), and a 3/4 time signature. The music consists of a series of eighth and sixteenth notes, many of which are beamed together and have slurs above them. The notation is written in dark ink on aged paper.



Handwritten musical notation on a system of three staves, identical in notation to the first system. It features a treble clef, a key signature of one sharp, and a 3/4 time signature, with various note values and slurs.

Handwritten musical notation on a system of three staves, identical in notation to the first system. It features a treble clef, a key signature of one sharp, and a 3/4 time signature, with various note values and slurs.

Handwritten musical notation on a system of three staves, identical in notation to the first system. It features a treble clef, a key signature of one sharp, and a 3/4 time signature, with various note values and slurs.

Handwritten musical score for the first system, measures 226-230. The music is written on five staves. The first staff begins with a treble clef, a key signature of one flat (B-flat), and a 3/4 time signature. The notation includes various note values, rests, and dynamic markings such as *mf* and *pp*. The piece concludes with a double bar line and a repeat sign.

Handwritten musical score for the second system, measures 231-235. The notation continues on five staves, featuring similar rhythmic patterns and melodic lines. It includes dynamic markings like *mf* and *pp*, and ends with a double bar line and a repeat sign.

Handwritten musical score for the third system, measures 236-240. The notation is spread across five staves, maintaining the musical style of the previous systems. It concludes with a double bar line and a repeat sign.

229. || 3/4

220. || 3/4

Handwritten musical score on ten staves. The first staff begins with a treble clef, a 2/2 time signature, and a key signature of one flat (B-flat). The notation is dense, featuring many beamed eighth and sixteenth notes, often with slurs. The piece concludes with a double bar line and a fermata on the final note of the tenth staff.

Handwritten musical score on two staves. The first staff begins with a treble clef, a 2/2 time signature, and a key signature of one flat (B-flat). The notation continues with beamed eighth and sixteenth notes, similar to the first section. The second staff concludes with a double bar line and a fermata on the final note.

Handwritten musical score for the first system, consisting of three staves. The notation is dense with many beamed notes and rests, indicating a complex rhythmic structure. The first two staves appear to be for different voices or instruments, while the third staff provides a bass line.

Handwritten musical score for the second system, starting with a treble clef and a 3/4 time signature. It consists of seven staves of music. The notation is highly detailed, with many beamed notes and rests. The first staff begins with a large '2' and a '3' above it, possibly indicating a measure or a specific rhythmic pattern. The system concludes with a double bar line and a fermata.

Handwritten musical score for the third system, starting with a treble clef and a 2/4 time signature. It consists of two staves. The notation continues with complex rhythmic patterns. The system ends with a double bar line and a fermata, followed by the initials 'P. to'.

The first system of the handwritten musical score consists of four staves. The top staff begins with a treble clef and a key signature of one flat (B-flat). The music is written in a complex, multi-measure style, featuring numerous beamed notes and rests. The notation is dense and characteristic of 18th or 19th-century manuscript notation.

The second system of the handwritten musical score consists of seven staves. It begins with a treble clef, a key signature of one flat, and a 3/8 time signature. The notation continues with intricate rhythmic patterns and complex melodic lines. The handwriting is consistent with the first system, showing a high level of technical skill and attention to detail.

226

227.

228.

V. Pto

229

230

Handwritten musical score, first system. It begins with a treble clef, a 3/4 time signature, and a key signature of one flat (B-flat). The notation includes a series of eighth and sixteenth notes, many of which are grouped into triplets. The first measure contains a handwritten '2 2 2' above the staff. The system concludes with a double bar line and a fermata over the final note.

Handwritten musical score, second system. It begins with a treble clef, a 3/4 time signature, and a key signature of one flat (B-flat). The notation includes a series of eighth and sixteenth notes, many of which are grouped into triplets. The first measure contains a handwritten '2 2 2' above the staff. The system concludes with a double bar line and a fermata over the final note.

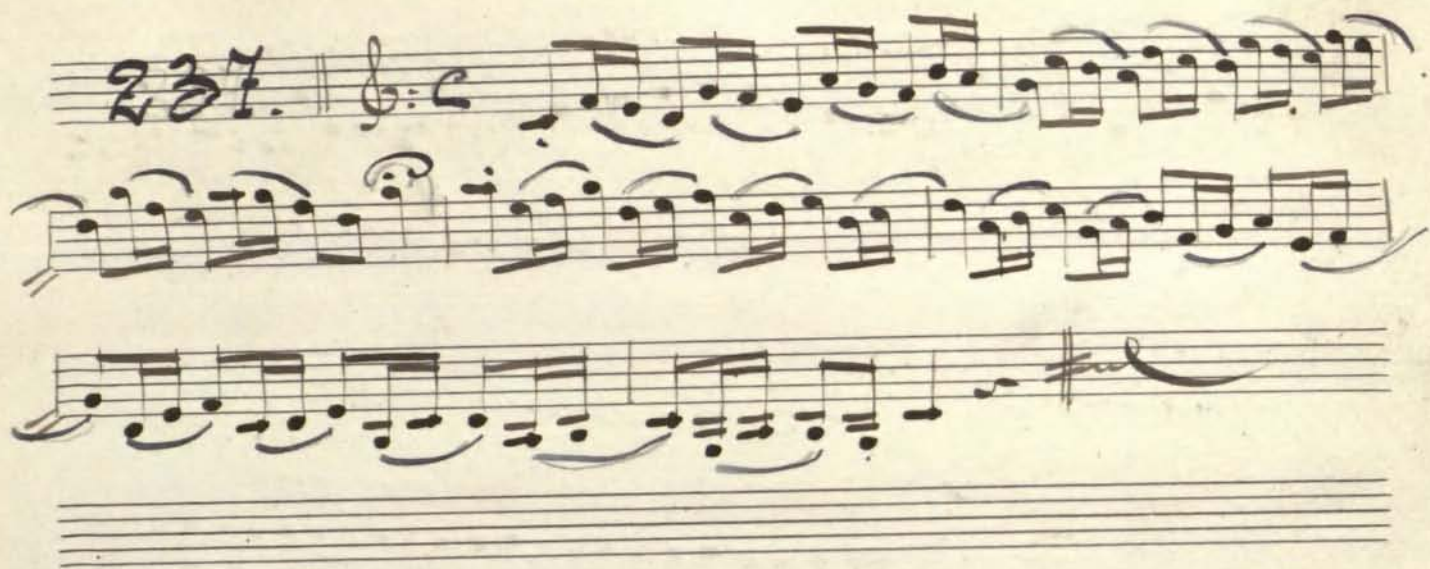
Handwritten musical score for the first system, featuring six staves of music. The notation includes various note values, rests, and dynamic markings. The first staff begins with a treble clef, a 3/4 time signature, and a key signature of one sharp (F#). The music consists of six staves of music, with the first five staves containing the main melody and the sixth staff containing a shorter, concluding phrase.

Handwritten musical score for the second system, featuring six staves of music. The notation includes various note values, rests, and dynamic markings. The first staff begins with a treble clef, a 3/4 time signature, and a key signature of one sharp (F#). The music consists of six staves of music, with the first five staves containing the main melody and the sixth staff containing a shorter, concluding phrase.

varios.

235. | &: C

236. | &: C

237. || tr C 

238. || tr $\frac{3}{2}$ 

239. || tr $\frac{3}{4}$ 

2 No. 10.

2 No. 10.

V. Pto

Handwritten musical score, first system, four staves. The notation includes various rhythmic values, accidentals, and dynamic markings. The first staff begins with a treble clef and a key signature of one sharp (F#). The music is written in a fluid, cursive style characteristic of 18th or 19th-century manuscripts.

Two empty musical staves, consisting of five lines each, positioned below the first system.

Handwritten musical score, second system, eight staves. The notation continues with complex rhythmic patterns and melodic lines. The first staff of this system begins with a treble clef, a key signature of one sharp (F#), and a time signature of 3/4. The music is written in a fluid, cursive style characteristic of 18th or 19th-century manuscripts.

Two empty musical staves, consisting of five lines each, positioned below the second system.

Handwritten musical score on a single system of seven staves. The notation includes treble clef, a key signature of two sharps (F# and C#), and a 3/4 time signature. The music is written in a cursive, handwritten style. The first staff begins with a treble clef, a key signature of two sharps, and a 3/4 time signature. The notation consists of eighth and sixteenth notes, often beamed together in groups, with various rests and phrasing slurs. The piece concludes with a double bar line and a repeat sign.

Handwritten musical score on a single system of seven staves, identical to the first system. It features the same notation: treble clef, two sharps key signature, 3/4 time signature, and eighth/sixteenth note patterns with phrasing slurs. The system ends with a double bar line and a repeat sign.

Handwritten musical score, first system. It consists of four staves. The first staff begins with a treble clef, a key signature of one sharp (F#), and a time signature of 2/4. A handwritten '3' with a slur is above the first measure. The music is written in a style characteristic of 19th-century manuscript notation, featuring many beamed eighth and sixteenth notes, often with slurs. The system concludes with a double bar line and a fermata.

Handwritten musical score, second system. It consists of four staves. The first staff begins with a treble clef, a key signature of one sharp (F#), and a time signature of 3/4. Handwritten annotations '3' and '4' are present above the first and second measures, respectively. The notation continues with complex rhythmic patterns and slurs. The system ends with a double bar line and a fermata.

Handwritten musical score, third system. It consists of four staves. The first staff begins with a treble clef, a key signature of one sharp (F#), and a time signature of 2/4. A handwritten '3' with a slur is above the first measure. The notation is consistent with the previous systems, showing dense rhythmic textures. The system concludes with a double bar line and a fermata.

Handwritten musical score for exercise 218. The notation is in treble clef with a 2/4 time signature. It features a series of rhythmic patterns, including eighth and sixteenth notes, and rests. A dynamic marking of *ff* is present at the beginning. The piece concludes with a double bar line and a fermata.

Handwritten musical score for exercise 219. The notation is in treble clef with a 2/4 time signature. It features a series of rhythmic patterns, including eighth and sixteenth notes, and rests. A dynamic marking of *ff* is present at the beginning. The piece concludes with a double bar line and a fermata.

Handwritten musical score for exercise 250. The notation is in treble clef with a 2/4 time signature. It features a series of rhythmic patterns, including eighth and sixteenth notes, and rests. A dynamic marking of *ff* is present at the beginning. The piece concludes with a double bar line and a fermata.

J. Pto

Handwritten musical score for the first system, consisting of four staves. The notation includes various rhythmic values, beams, and slurs, typical of a manuscript for a string or woodwind instrument.

5^{as}

Handwritten musical score for the second system, starting with a treble clef and a 2/4 time signature. The notation includes various rhythmic values, beams, and slurs, typical of a manuscript for a string or woodwind instrument.

6^{as}

Handwritten musical score for the third system, starting with a treble clef and a 2/4 time signature. The notation includes various rhythmic values, beams, and slurs, typical of a manuscript for a string or woodwind instrument.

75

Handwritten musical score for the first system. It begins with a treble clef, a 3/4 time signature, and a key signature of one flat. The music is written on a single staff and includes various rhythmic values such as eighth and sixteenth notes, along with slurs and ties.

Two empty musical staves, likely intended for a second part of the music.

Handwritten musical score for the second system. It begins with a treble clef, a 3/4 time signature, and a key signature of one flat. The music is written on a single staff and includes various rhythmic values such as eighth and sixteenth notes, along with slurs and ties.

Handwritten musical score on a single system of seven staves. The music is written in treble clef with a key signature of one sharp (F#) and a 3/4 time signature. The notation includes various note values, rests, and phrasing slurs. The first staff begins with a treble clef, a key signature of one sharp, and a 3/4 time signature. The music continues across the seven staves, ending with a double bar line and a fermata on the final note of the seventh staff.

Handwritten musical score on a single system of four staves. The music is written in treble clef with a key signature of one sharp (F#) and a 2/4 time signature. The notation includes various note values, rests, and phrasing slurs. The first staff begins with a treble clef, a key signature of one sharp, and a 2/4 time signature. The music continues across the four staves, ending with a double bar line and a fermata on the final note of the fourth staff.

257.

258.

259.

262. | & 3/4

Handwritten musical score for exercise 262. It begins with a treble clef and a 3/4 time signature. The notation consists of five staves of music, primarily using eighth and sixteenth notes, with some rests and phrasing slurs. The piece concludes with a double bar line and a sharp sign on the fifth staff.

263. | & 3/4

Handwritten musical score for exercise 263. It begins with a treble clef and a 3/4 time signature. The notation consists of six staves of music, primarily using eighth and sixteenth notes, with some rests and phrasing slurs. The piece concludes with a double bar line and a sharp sign on the sixth staff.

264

Handwritten musical score for exercise 264. It begins with a treble clef and a 3/4 time signature. The first staff contains a series of eighth and sixteenth notes, some beamed together. The second and third staves continue the melody with similar rhythmic patterns and some rests. There are some markings like '3' in circles and 'X' on the staves.

265

Handwritten musical score for exercise 265. It begins with a treble clef and a common time signature (C). The score consists of eight staves of music. The first staff shows a sequence of notes, followed by more complex rhythmic patterns in the subsequent staves. There are several slurs and accents throughout the piece. The notation includes various note values and rests.

266. *Andante*

Handwritten musical score for piece 266. The score is written on six staves in a treble clef with a key signature of one sharp (F#). The tempo is marked 'Andante'. The notation includes various note values, rests, and dynamic markings.

267. *Andante* *pas*

Handwritten musical score for piece 267. The score is written on six staves in a treble clef with a key signature of one sharp (F#). The tempo is marked 'Andante' and 'pas'. The notation includes various note values, rests, and dynamic markings.

268.

269.

270.

= Intervalos =

271. || G : C

272 || G : C

Handwritten musical score for a single melodic line, consisting of seven staves. The notation includes eighth and sixteenth notes, rests, and a final double bar line with a sharp sign.

Two empty musical staves.

243. || 4/4

Handwritten musical score for a new section, consisting of six staves. The notation includes quarter, eighth, and sixteenth notes, rests, and a final double bar line with a sharp sign.

274. ||

275. ||

276. || C C

277 || C C

278.

Handwritten musical score for exercise 278. It consists of six staves of music in treble clef with a common time signature. The notation includes various note values, rests, and dynamic markings such as 'p' and 'pp'. The piece concludes with a double bar line and a fermata.

279

Handwritten musical score for exercise 279. It consists of six staves of music in treble clef with a common time signature. The notation includes various note values, rests, and dynamic markings such as 'p' and 'pp'. The piece concludes with a double bar line and a fermata.

Escalas y Ejercicios cromáticos

280. | G:C

This exercise consists of two systems of chromatic scales. The first system is in treble clef (G:C) and covers the range from G4 to G5. The second system is in bass clef (b) and covers the range from B1 to B2. Each system includes a treble staff with slurs and accents, and a bass staff with slurs and accents.

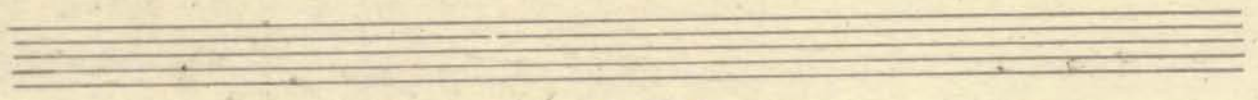
281. | G:C

This exercise consists of two systems of chromatic scales. The first system is in treble clef (G:C) and covers the range from G4 to G5. The second system is in bass clef (b) and covers the range from B1 to B2. Each system includes a treble staff with slurs and a bass staff with slurs.

282. ||

V. Pto

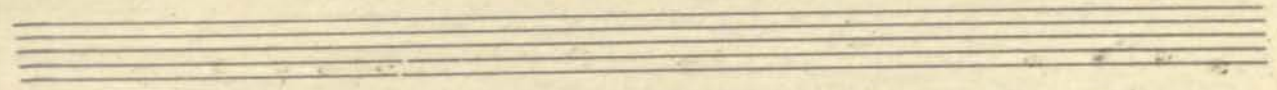
Handwritten musical score for the first system, consisting of five staves of music. The notation includes various notes, rests, and slurs, indicating a complex melodic and harmonic structure.



283. |

Handwritten musical score for the second system, starting with the number 283. The notation includes a treble clef, a 4/4 time signature, and ten staves of music. The music features various notes, rests, and slurs, continuing the melodic and harmonic development.

The first system of the manuscript consists of ten staves of music. The notation includes various note values (quarter, eighth, and sixteenth notes), rests, and slurs. The key signature features one sharp (F#) and one flat (Bb). The music is written in a single system across ten staves.



282 18:4

The second system of the manuscript begins with the number '282' and a time signature of '18:4'. It consists of five staves of music. The notation includes various note values, rests, and slurs. The key signature remains one sharp and one flat. The system concludes with a double bar line and the initials 'V. Pto'.

Handwritten musical score, first system, consisting of five staves. The notation includes various note values, slurs, and accidentals (flats and naturals). The first staff begins with a treble clef and a key signature of one flat. The music flows across the staves with continuous phrasing indicated by slurs.

285

Handwritten musical score, second system, starting with the number 285 and a treble clef. This system consists of eight staves of music. The notation continues with complex rhythmic patterns and phrasing, including slurs and various note values. The system concludes with a double bar line and a sharp sign.

286.

♩:C

Handwritten musical score for exercise 286. It begins with a treble clef and a common time signature (C). The score consists of eight staves of music. The first staff contains the number '286.' and the time signature. The music is written in a single melodic line with various note values, including eighth and sixteenth notes, and rests. Slurs are used to group notes across measures. The key signature changes from one sharp (F#) to one flat (Bb) in the third measure of the first staff, and then to two flats (Bb, Eb) in the third measure of the second staff. The piece concludes with a double bar line and a fermata-like flourish.

287

♩:G

Handwritten musical score for exercise 287. It begins with a treble clef and a common time signature (C). The score consists of four staves of music. The first staff contains the number '287' and the time signature. The music is written in a single melodic line with various note values, including eighth and sixteenth notes, and rests. Slurs are used to group notes across measures. The key signature changes from one sharp (F#) to one flat (Bb) in the second measure of the first staff, and then to two flats (Bb, Eb) in the second measure of the second staff. The piece concludes with a double bar line and the handwritten text 'F. Pto'.

The first system of the handwritten musical score consists of six staves. The notation includes various rhythmic values such as eighth and sixteenth notes, often beamed together. Slurs are used to group notes across measures. The key signature appears to be one flat (B-flat). The first staff begins with a treble clef and a common time signature. The music flows across the staves with some rests and dynamic markings.

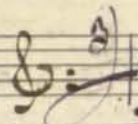
288.
The second system of the handwritten musical score begins with the number '288.' followed by a treble clef and a 2/2 time signature. It consists of eight staves of music. The notation is more complex, featuring many beamed sixteenth and thirty-second notes. Slurs are used extensively to group these rapid passages. The key signature remains one flat. The system concludes with a double bar line and a fermata over the final note.

Handwritten musical notation on two staves. The first staff contains a sequence of notes with slurs and accents. The second staff continues the sequence, ending with a double bar line and a sharp sign.

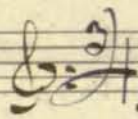
289.

Handwritten musical notation on ten staves. The notation includes various note values, slurs, and accidentals. The piece concludes with a double bar line and a sharp sign.

290.



291.



A handwritten musical score consisting of six staves. The notation is dense, featuring many sixteenth and thirty-second notes, often beamed together. Large slurs are used to group phrases across multiple staves. The key signature has one flat (B-flat), and the time signature is not explicitly shown but appears to be 3/4 or 3/8. The music concludes with a double bar line and a fermata on the final note of the sixth staff.

Vivace.

292.

A handwritten musical score for five staves, beginning with the tempo marking 'Vivace.' and the number '292.'. The music is in 3/4 time, indicated by the treble clef and a '3' over the first measure. The notation includes numerous triplets, marked with a '3' over the notes. The key signature has one flat. The score concludes with a double bar line and a fermata on the final note of the fifth staff.

293. |&: 4

This block contains the first system of handwritten musical notation, numbered 293. It consists of 12 staves of music in 4/4 time. The notation includes various rhythmic values such as eighth and sixteenth notes, often beamed together. There are several slurs and phrasing marks throughout the piece. The key signature is one sharp (F#). The system concludes with a double bar line and a repeat sign.

294. |&: 4

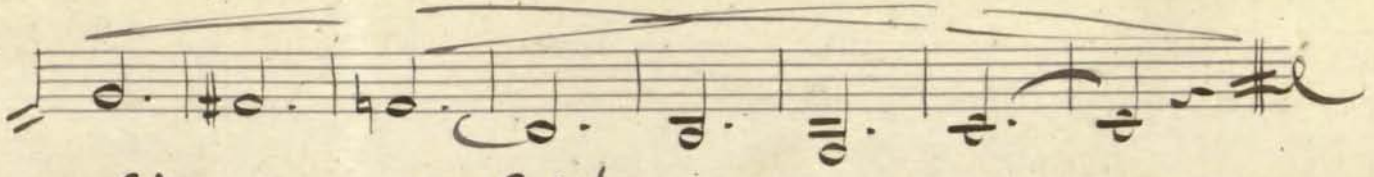
This block contains the second system of handwritten musical notation, numbered 294. It consists of 4 staves of music in 4/4 time. The notation features a mix of eighth and sixteenth notes, with prominent slurs and phrasing marks. The key signature is one sharp (F#). The system ends with a double bar line and a repeat sign.

A large section of handwritten musical notation on ten staves. The notation is dense and includes various musical symbols such as notes, rests, slurs, and dynamic markings like *pp* and *mf*. The piece appears to be in a minor key, indicated by the presence of flat signs on the notes.

295. *α note.*

A smaller section of handwritten musical notation on three staves. It begins with the number "295." and the instruction "*α note.*". The notation includes notes with sharp signs, slurs, and dynamic markings. The piece concludes with the signature "J. Pto" in the bottom right corner.

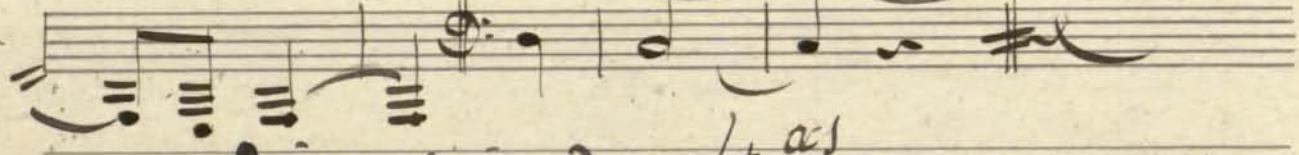
A handwritten musical score consisting of 15 staves. The notation is in a single system, likely for a single melodic line. The music is written in a style characteristic of the 18th or 19th century, featuring a key signature of one flat (B-flat) and a common time signature (C). The notes are primarily quarter and eighth notes, often beamed together in groups. There are several slurs and phrasing marks throughout the piece. The paper shows signs of age, with some staining and discoloration.



Ejercicio de 3^{as}.



296



Ejercicio de 4^{as}.



297.

Ejercicios de 5as

298. | &: 2/4

Ejercicio de 6as

299. | &: 2/4

Ejercicio de 7as

♩ = 100. | 6/8

Ejercicio de 8as

201. 3/4

Rit.

202. 2/4

The first system of the handwritten musical score consists of six staves. The notation includes various rhythmic values, accidentals (sharps and flats), and phrasing slurs. The music appears to be in a minor key, as indicated by the presence of flats. The staves are connected by a large brace on the left side.

The second system of the handwritten musical score begins with the number '207.' followed by a treble clef and a 3/4 time signature. It consists of six staves of musical notation, similar in style to the first system, with notes, rests, and accidentals. The staves are connected by a large brace on the left side. The notation continues with various rhythmic patterns and phrasing.

J. Pto

The first system of the handwritten musical score consists of five staves. The notation is dense, featuring numerous eighth and sixteenth notes, often beamed together. There are several slurs spanning across multiple staves, indicating a continuous melodic or harmonic line. The key signature appears to have one sharp (F#), and the time signature is not explicitly shown but the note values suggest a common or cut time.

208

The second system begins with the number '208' written in a large, decorative hand. It features a treble clef and a 3/4 time signature. The notation continues with similar rhythmic patterns to the first system, including beamed notes and slurs. The system concludes with a double bar line and a final flourish.

309. | G: C

Handwritten musical score for exercise 309. It consists of eight staves of music in G major, 2/4 time. The piece features a melodic line with many slurs and trills, and a bass line with triplets and slurs. The notation includes various accidentals and dynamic markings.

320. | G: 2/4

Handwritten musical score for exercise 320. It consists of four staves of music in G major, 2/4 time. The piece features a melodic line with many slurs and trills, and a bass line with triplets and slurs. The notation includes various accidentals and dynamic markings. The piece concludes with a final cadence and the signature 'V. Pto'.

The first system of the manuscript consists of six staves of music. The notation includes various rhythmic values, accidentals (sharps and flats), and articulation marks such as slurs and accents. The music appears to be a single melodic line, possibly for a violin or flute. The staves are connected by a brace on the left side.

Allegro

The second system begins with a treble clef and a 3/4 time signature. It contains ten staves of music. The notation is more complex than the first system, featuring many triplets and slurs. The music continues with a similar melodic style, maintaining the same key signature and tempo marking.

Handwritten musical score for the first system, consisting of six staves. The notation includes various rhythmic values, accidentals, and articulation marks such as slurs and accents.

Handwritten musical score for the second system, consisting of seven staves. It begins with a treble clef and a 3/2 time signature. The notation features complex rhythmic patterns and dynamic markings.

Rall.

Handwritten musical score for the first system. It begins with a treble clef and a 3/2 time signature. The key signature has one flat (B-flat). The music is written on a single staff and includes a variety of note values, rests, and slurs.

Handwritten musical score for the second system. It begins with a treble clef and a 2/4 time signature. The key signature has one flat (B-flat). The music continues the melody from the first system, featuring various note values, rests, and slurs.

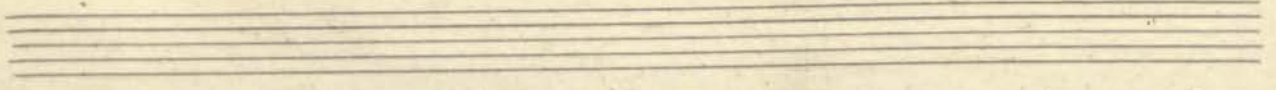
This page contains a handwritten musical score for 'Articulaciones del No. 314'. The score is written on ten staves. The first staff begins with a treble clef and a 3/8 time signature. The second staff starts with a 3/8 time signature and a common time signature (C). The music consists of rhythmic patterns and articulation exercises, featuring various note values, rests, and dynamic markings. The notation includes slurs, accents, and specific articulation symbols. The score concludes with a double bar line and a fermata on the final note of the tenth staff.

Handwritten musical score for a piece in 2/4 time, featuring a treble clef and a key signature of one flat. The score consists of ten staves of music. The notation includes various notes, rests, and dynamic markings. The first staff begins with a treble clef, a 2/4 time signature, and a key signature of one flat. The music is written in a single system, with each staff containing a line of music. The notation is clear and legible, with some markings such as 'p' and 'f' indicating dynamics. The score ends with a double bar line and a fermata.

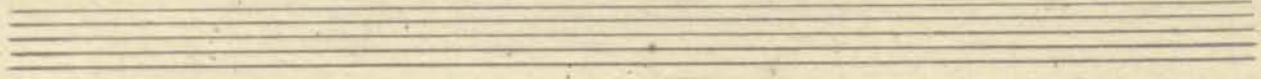
Handwritten musical score for a piece in 2/8 time, featuring a treble clef and a key signature of one flat. The score consists of two staves of music. The notation includes various notes, rests, and dynamic markings. The first staff begins with a treble clef, a 2/8 time signature, and a key signature of one flat. The music is written in a single system, with each staff containing a line of music. The notation is clear and legible, with some markings such as 'p' and 'f' indicating dynamics. The score ends with a double bar line and a fermata.

Handwritten musical score for the first system, consisting of three staves. The notation includes various notes, rests, and accidentals, with some notes grouped by slurs and some having fingerings indicated by numbers 1, 2, and 3.

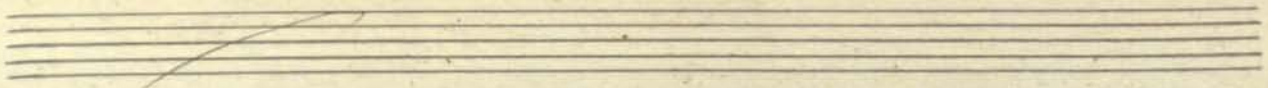
Handwritten musical score for the second system, starting with a treble clef and a 2/2 time signature. It consists of ten staves of music, featuring complex rhythmic patterns, slurs, and accidentals. The notation is dense and detailed, with many notes and rests.



320. || G^{\flat} : F .



321. || G^{\flat} : F .



The first system of the handwritten musical score consists of six staves. The notation is dense, featuring a variety of note values including eighth and sixteenth notes, as well as rests. The music is written in a single system, with each staff containing a line of music. The paper shows signs of age, with some staining and wear.

The second system of the handwritten musical score consists of seven staves. The notation continues from the first system, maintaining the same level of complexity with various note values and accidentals. The staves are filled with musical notation, and the overall appearance is that of a well-used manuscript.

322. || G: 3/4

Articulaciones para los Ejercicios nos 323 y 324.
Estudiando toda la extensión de la Trompa.

324. || G: 3/4

Handwritten musical score for guitar, numbered 325. The score is written on 12 staves. It begins with a treble clef and a common time signature (C). The music consists of a series of chords and melodic lines, with several instances of an 'X' mark above notes, likely indicating a specific technique or a correction. The notation includes various rhythmic values and accidentals.

